

### Nominations

- Urban
- Park Residential
- Rural
- Areas Constrained by Natural Features & Resources
- Water Catchment Area
- Major Rivers
- Marine Protected Areas
- Capricornia Correctional Centre

### Centres Hierarchy

- 1 Yeppoon - Focus for Shire
- 2 Other centres providing local services

- Highways
- Major Roads
- Rail
- Major Powerlines
- Extractive Resources
- Major Tourist Facilities
- Bicentennial Trail

North

Source Information:  
Projection:

GIS data supplied by Livingstone Shire, 2003.  
AGD 84, Zone 56

Planning Scheme 2005

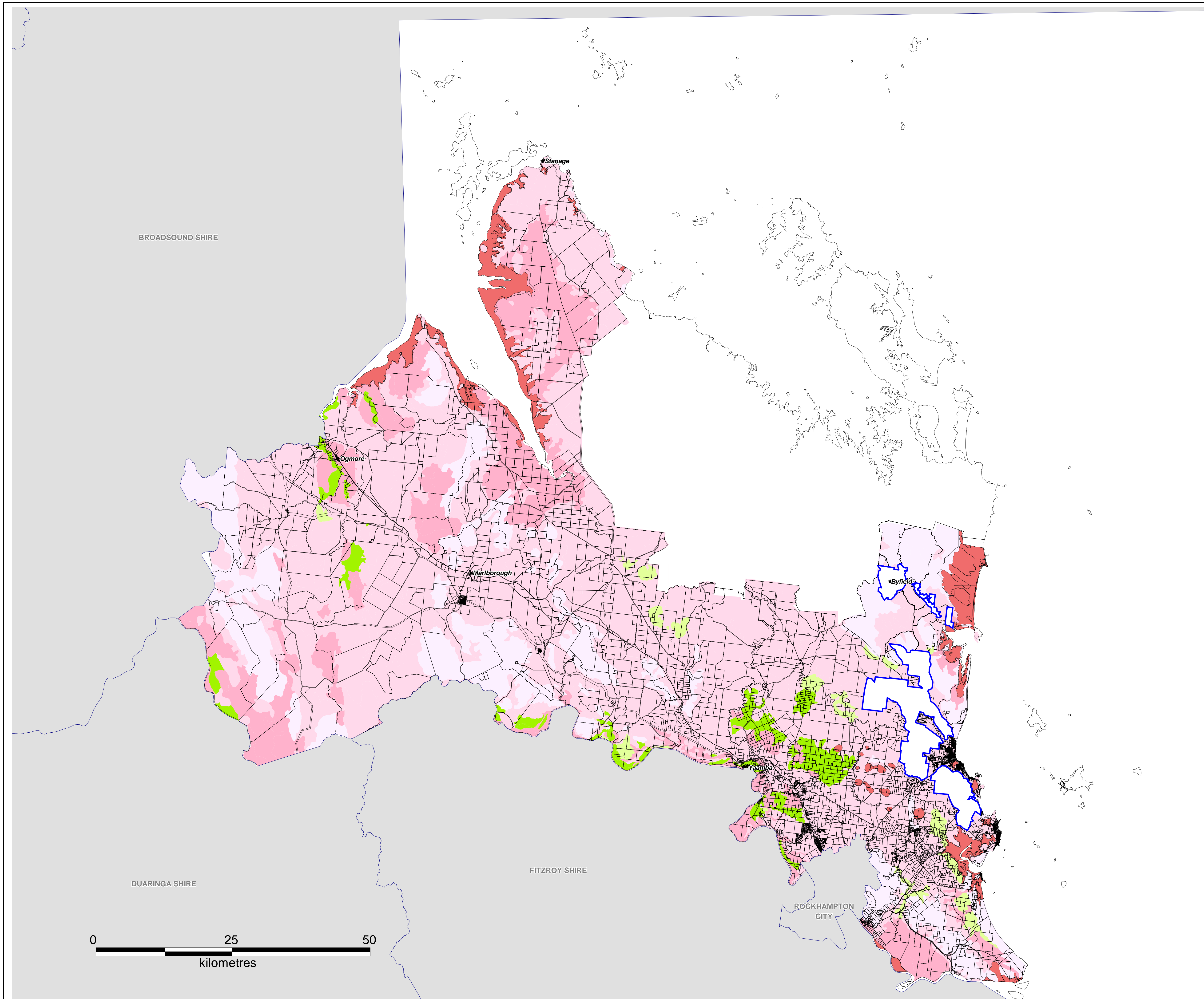
*living for lifestyle*

# PSM 1


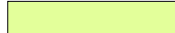





SHIRE OUTLINE

Commencement date: 17 October 2005





## AGRICULTURAL LAND CLASSIFICATIONS

BALANCE OF SHIRE	
	Class A1 Crop Land - Suitable for rainfed cropping and broadacre crops with irrigation from the Fitzroy River
	Class A2 Crop Land - Suitable for horticulture
	Class C1 Pasture Land - Suitable for grazing high quality pastures, either sown pastures where ground disturbance is possible for pasture establishment or native pastures on higher fertility soils
	Class C2 Pasture Land - Suitable for grazing native pastures with or without the addition of pasture species introduced without ground disturbance
	Class C3 Pasture Land - Suitable for light grazing of native pastures in accessible areas, especially very steep land more suited to forestry, conservation or catchment protection
	Other Non-Agricultural Land
	Urban

**CAPRICORN COAST - Area inside blue line  
see PSM 2B**



Source Information  
Projection:

GIS data supplied by QDNRM.  
AGD 84, Zone 56



Planning Scheme 2005

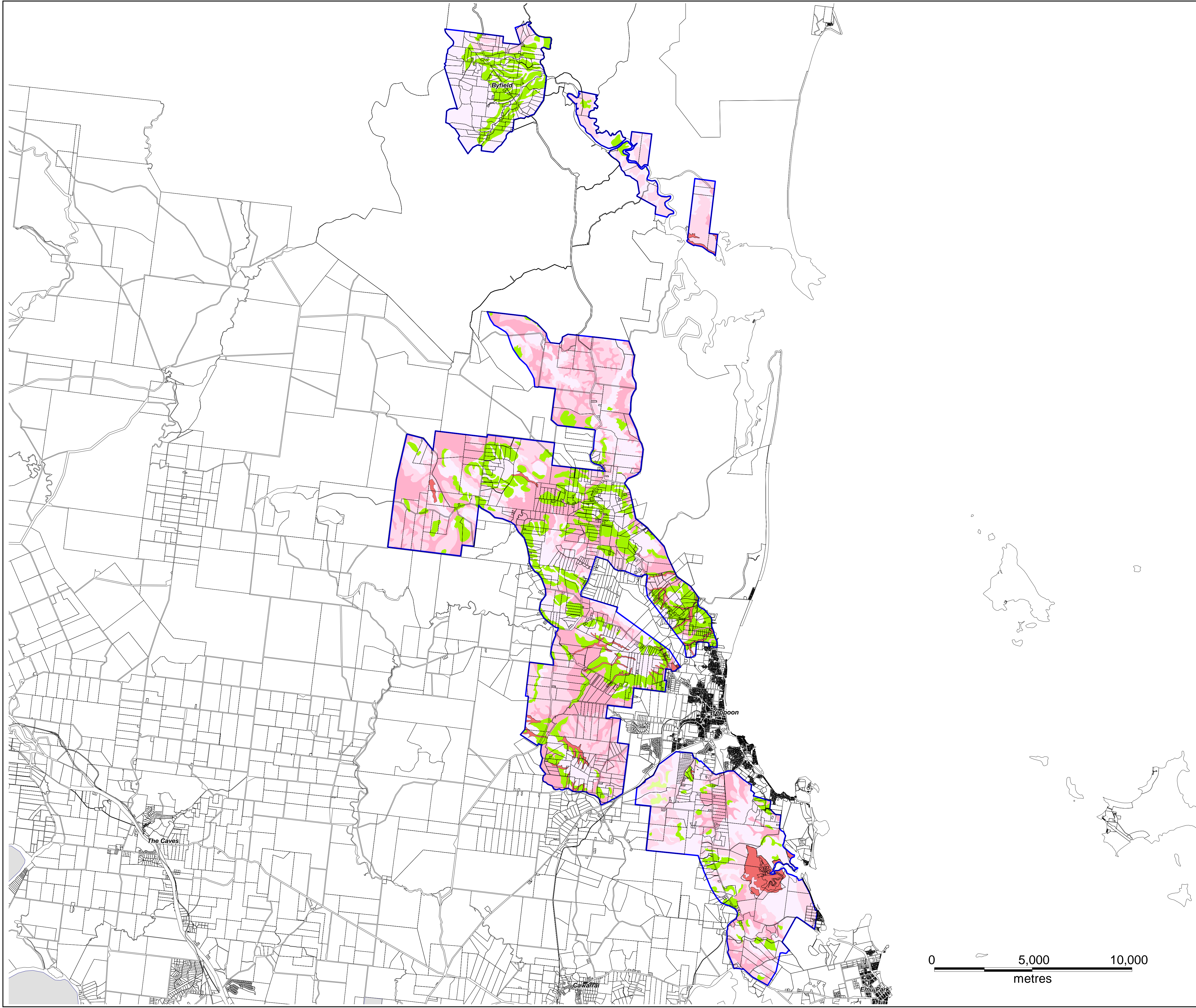
living for lifestyle

# PSM 2A

## AGRICULTURAL LAND CLASSIFICATIONS

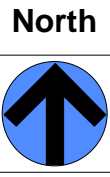
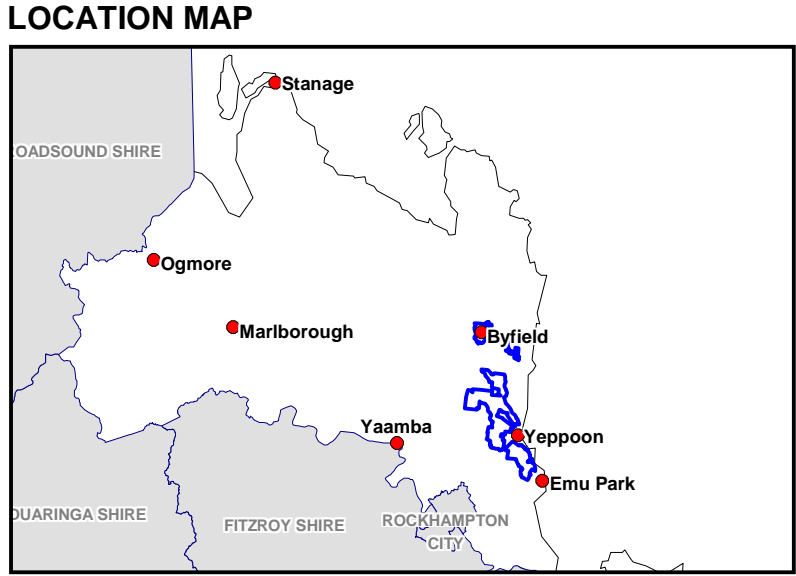
Commencement date: 17 October 2005





# AGRICULTURAL LAND CLASSIFICATIONS

CAPRICORN COAST - area inside the blue line		
	Class A1	Crop Land - Suitable for plantation, tree and vine crops with minor or moderate limitations
	Class A2	Crop Land - Suitable for plantation crops (pineapple only) with moderate limitations
	Class C1	Pasture Land - Suitable for sown pastures with moderate limitations
	Class C2	Pasture Land - Marginal for sown pastures with severe limitations
	Class C3	Pasture Land - Suitable for light grazing of native pastures in accessible areas, otherwise extreme limitations
	Other	Non-Agricultural Land



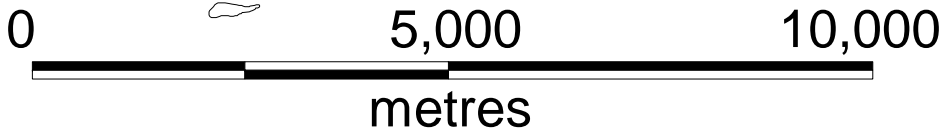
Source Information: GIS data supplied by QDNRM.  
Projection: AGD 84, Zone 56



## PSM 2B

AGRICULTURAL LAND CLASSIFICATIONS

Commencement date: 17 October 2005







North



Source Information:  
Yeppoon Central & Wattle  
Grove Built Form &  
Streetscape Study, 2003

### Yeppoon Structure Plan

- Business Precinct
- ▨ Business/Tourist Precinct
- Cultural/Civic Precinct
- Tourist precinct
- ▨ Yeppoon Rail Yard Site
- ▭ Town Square



- Corner Sites
- Properties built to boundary with awnings over street frontage footpaths
- . - . Buildings set back along Esplanade for landscape and forecourt areas
- Extent of Yeppoon Structure Plan Area



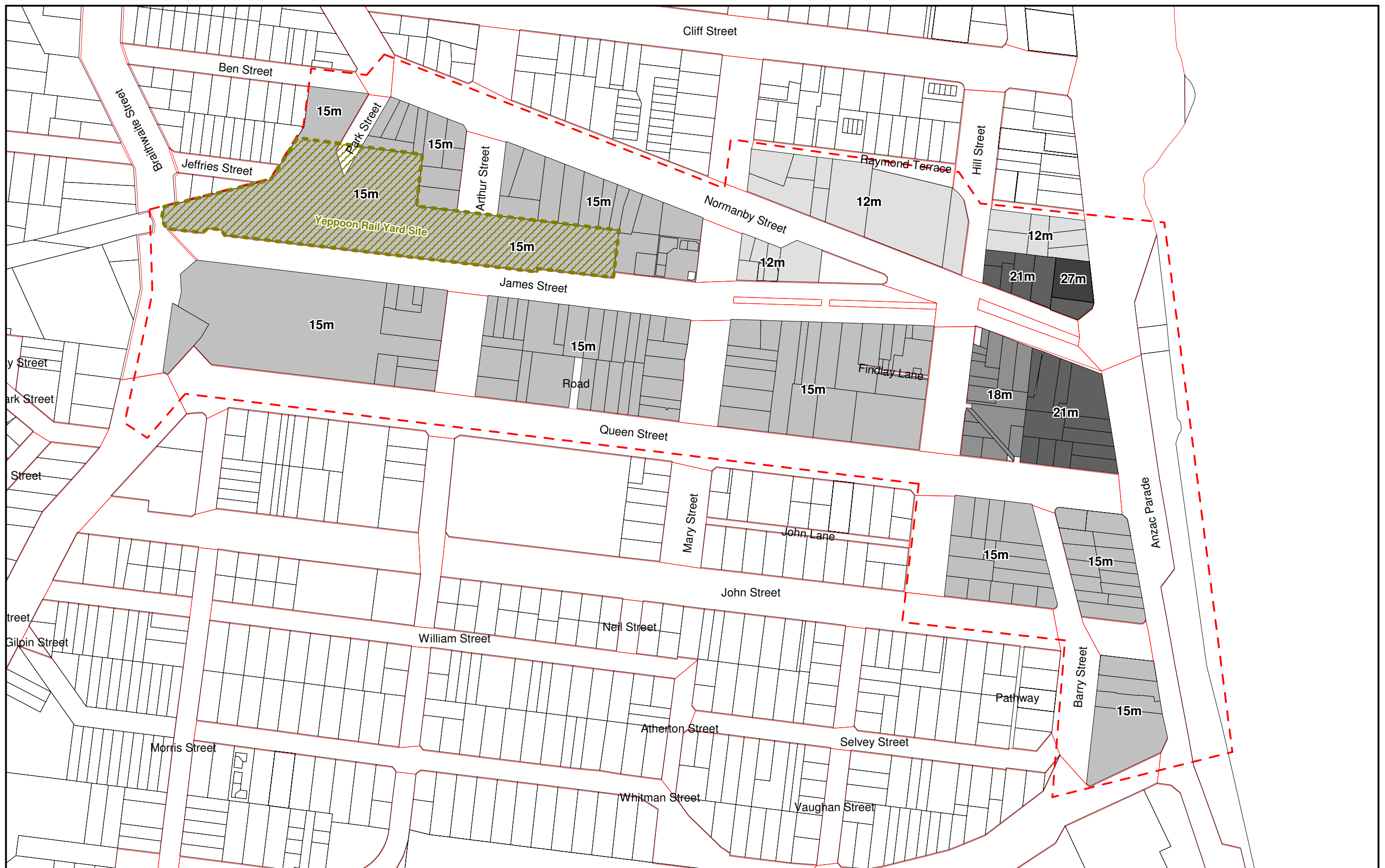
Planning Scheme 2005

*living for lifestyle*

NOTE:  
This compiled map PSM3A shows  
information effective from 24 February 2009.  
It has been compiled from:  
PSM3A - commenced 17 October 2005  
PSM3A/1 - commenced 24 February 2009.  
Commencement date: 24 February 2009.

**COMPILED**  
**Planning Scheme Map**  
**PSM 3A**





North



Source Information:  
Yeppoon Central & Wattle  
Grove Built Form &  
Streetscape Study, 2003



Maximum Building Height in Metres

Extent of Yeppoon Structure Plan

Yeppoon Rail Yard Site



Planning Scheme 2005

*living for lifestyle*

**COMPILED**

**Planning Scheme Map**  
**PSM 3B**  
Building Heights

NOTE:  
This compiled map PSM3B shows information  
effective from 24 February 2009.  
It has been compiled from:  
PSM3B - commenced 17 October 2005  
PSM3B/1 - commenced 24 February 2009.  
Commencement date: 24 February 2009.





Source Information:  
Yeppoon Central & Wattle  
Grove Built Form &  
Streetscape Study, 2003

- ⋯⋯⋯ Existing Laneways
- ⌞⋯⋯⌞ Future Pedestrian laneways
- ↔ Future Vehicle/pedestrian Laneways
- ↔ Future Road Connection
- Extent of Yeppoon Structure Plan

Yeppoon Rail Yard Site



Planning Scheme 2005

*living for lifestyle*

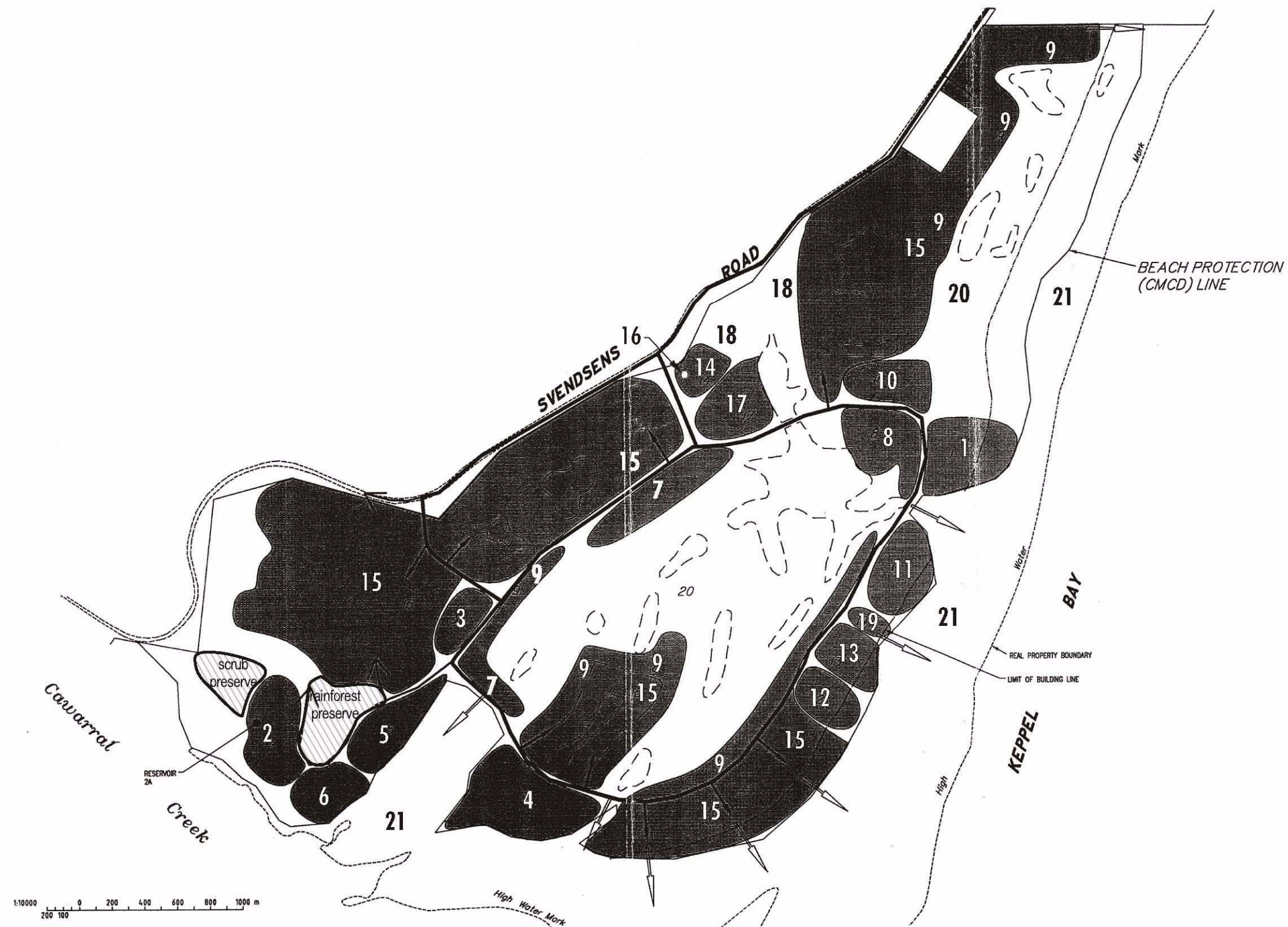
**COMPILED**  
**Planning Scheme Map**  
**PSM 3C**  
Linkages

NOTE:  
This compiled map PSM3C shows information  
effective 24 February 2009.  
It has been compiled from:

PSM3C - commenced 17 October 2005  
PSM3C/1 - commenced 24 February 2009.  
Commencement date: 24 February 2009.



# Great Barrier Reef International Resort Structure Map



Planning Scheme 2005

*living for lifestyle*





Planning Scheme Map  
**PSM 4**

Commencement date: 17 October 2005



# Great Keppel Island Structure Map

## Precincts

-  Accommdation and Associated Facilities
-  Village Commercial
-  Conservation
-  Aquifer



Source Information: DCDB Supplied by Livingstone Shire, 2003.  
Projection: AGD 84, Zone 56



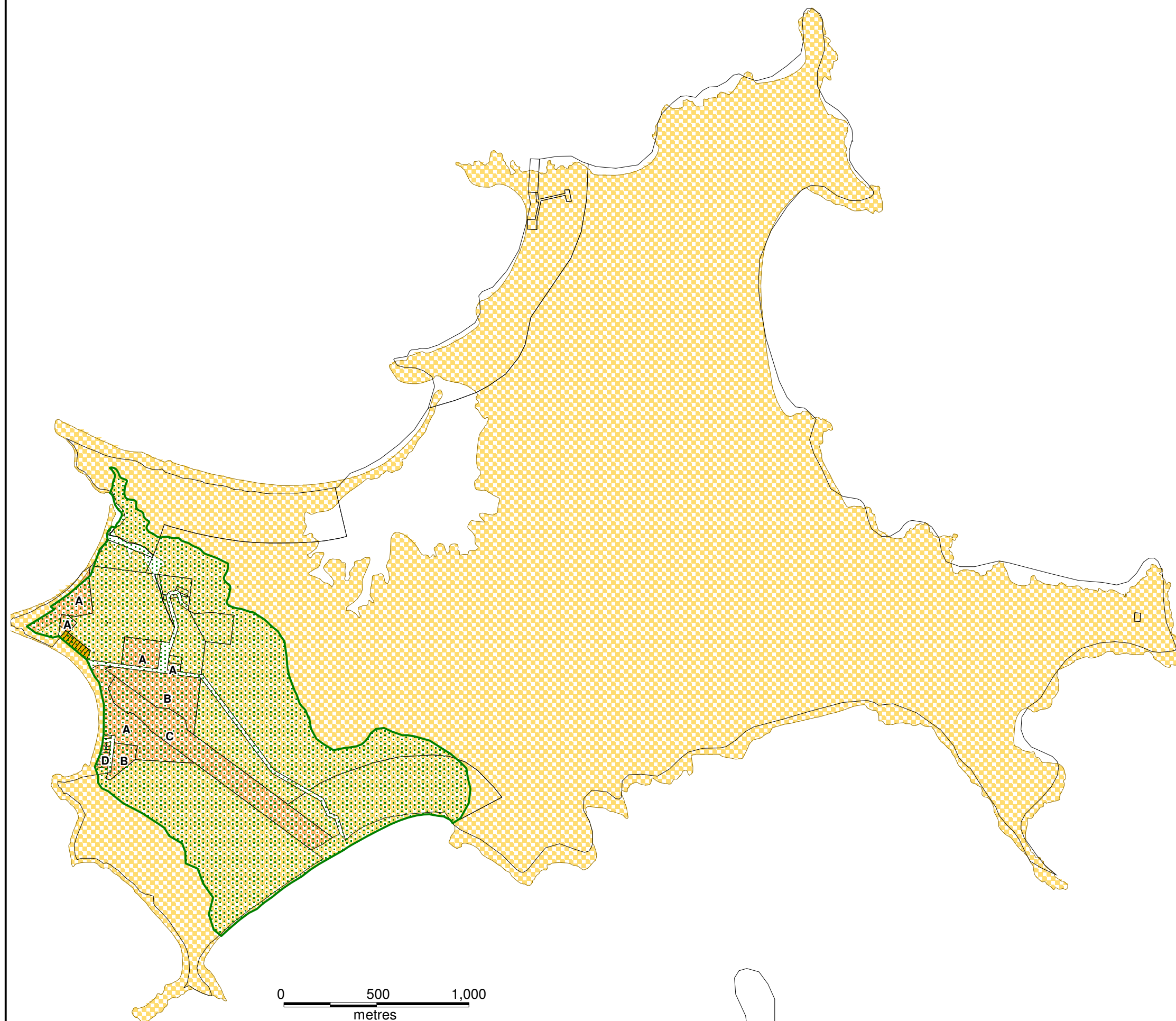
Planning Scheme 2005

*living for lifestyle*

**COMPILED**  
Planning Scheme Map  
**PSM 5**

NOTE:  
This compiled map PSM5 shows  
information effective from 24 February 2009.  
It has been compiled from:

PSM5 - commenced 17 October 2005  
PSM5/1 - commenced 24 February 2009.  
Commencement date: 24 February 2009.





Rosslyn Bay  
Structure Map

- Harbour Precinct
- Marina Precinct

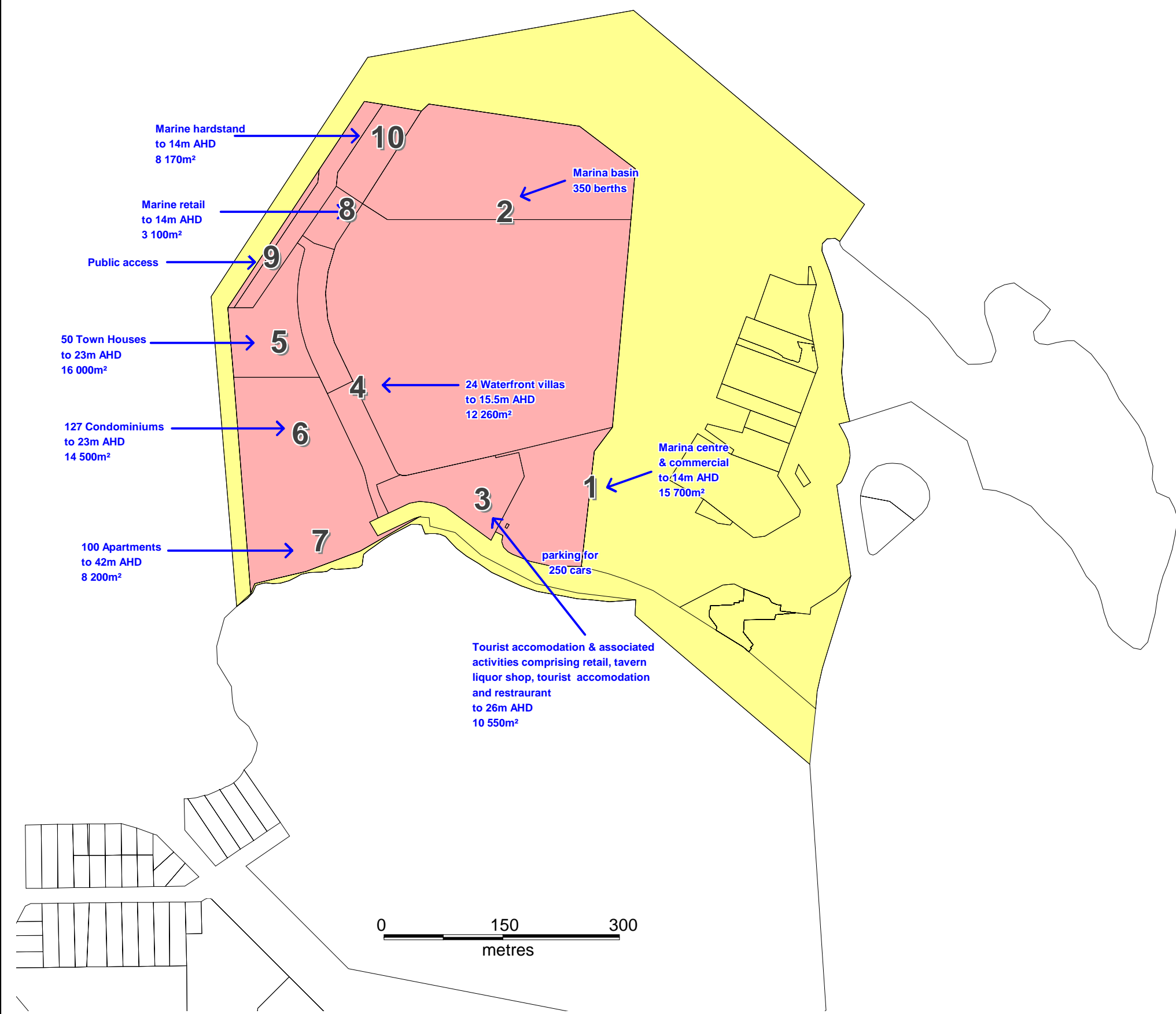


Source Information: DCDB Supplied by Livingstone Shire, 2003.  
Projection: AGD 84, Zone 56



Planning Scheme Map  
**PSM 6**

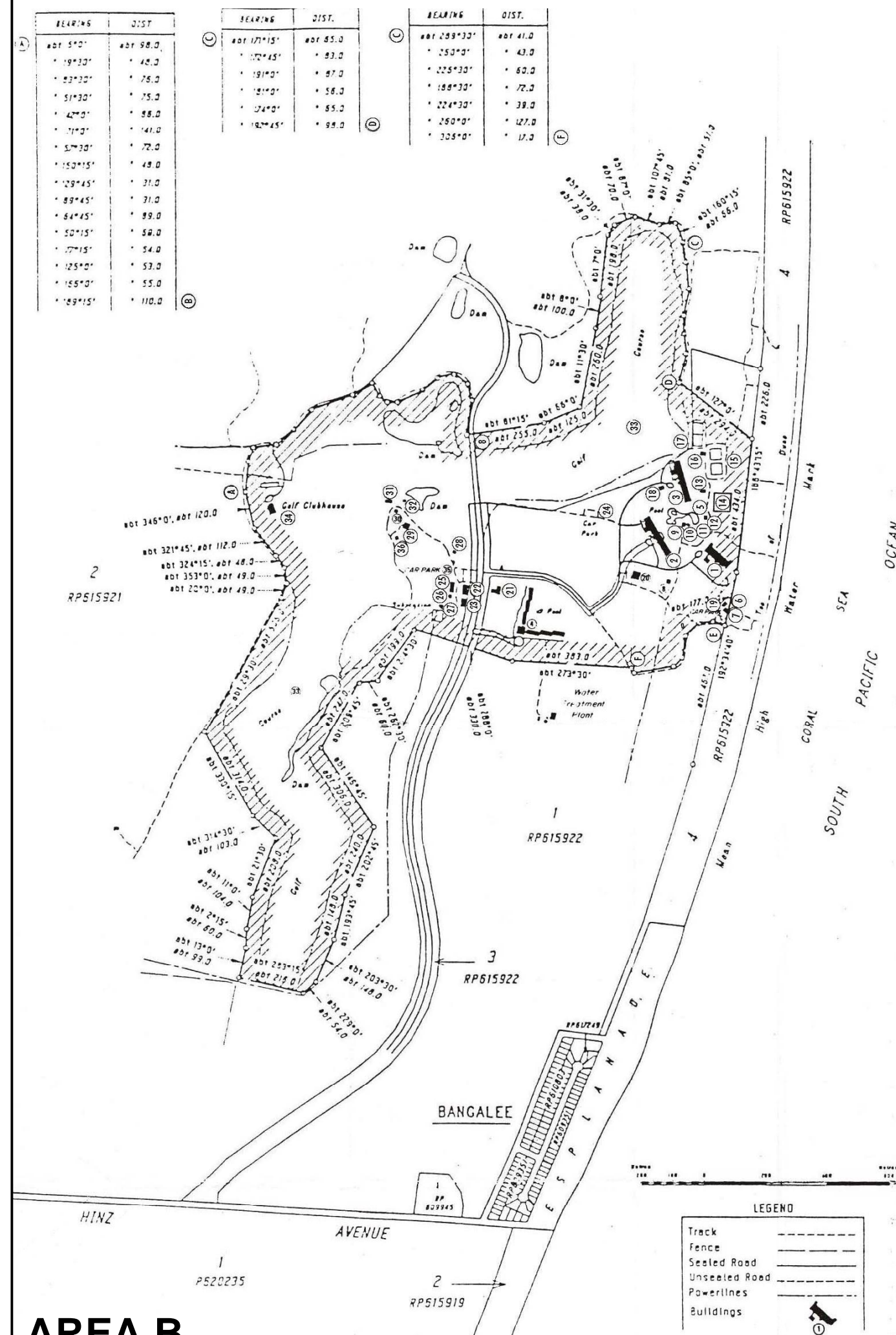
Commencement date: 17 October 2005







AREAS A & B



AREA B

## Capricorn Interational Resort Structure Map





Stanage Structure Map

- Precincts**
- Village
  - Conservation
  - Foreshore Management
  - Boundary PSM-7 Stanage Structure Map



Source Information: DCDB Supplied by Livingstone Shire, 2003.  
Projection: AGD 84, Zone 56



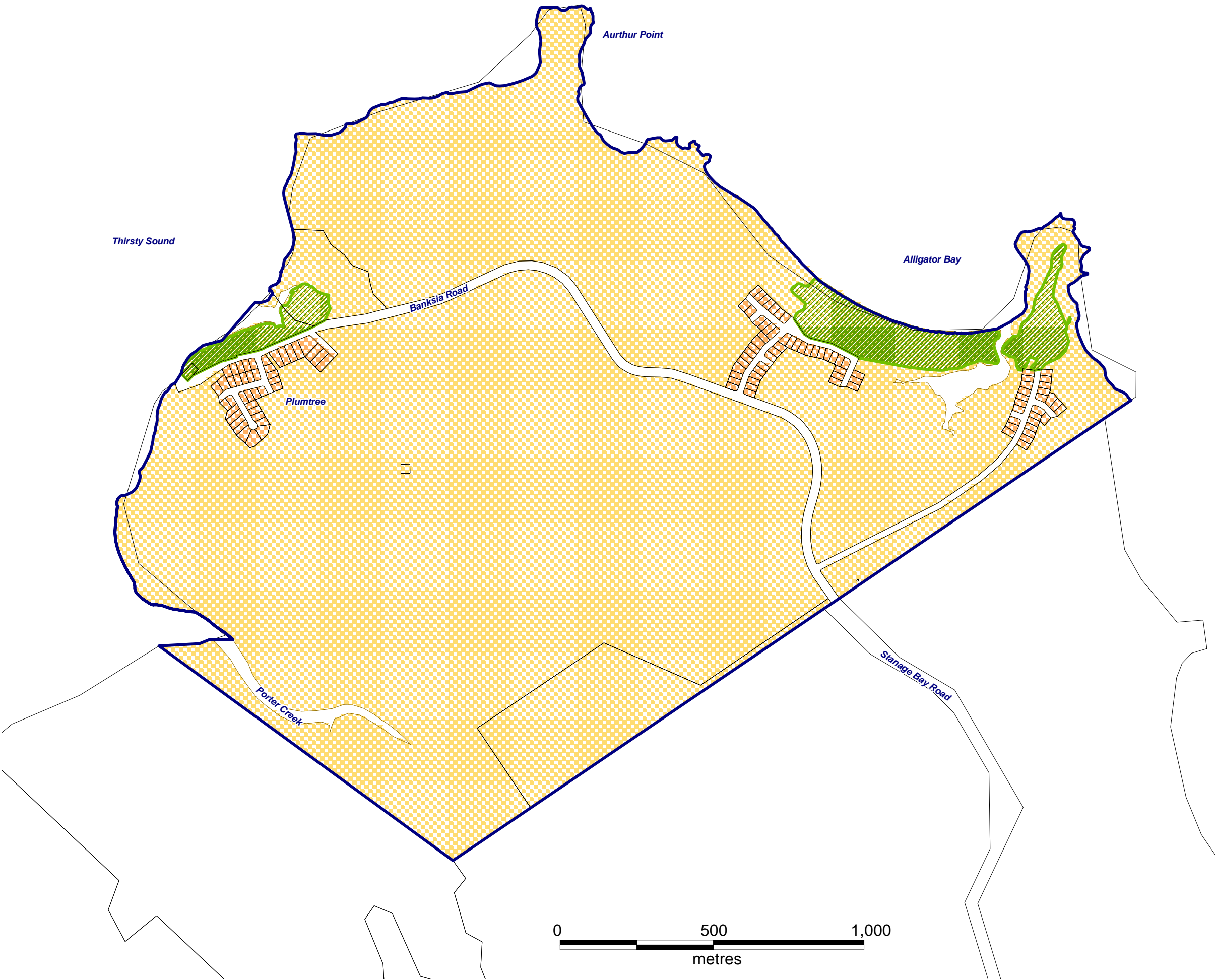
LIVINGSTONE  
SHIRE COUNCIL  
Faster and better for the South

Planning Scheme 2005

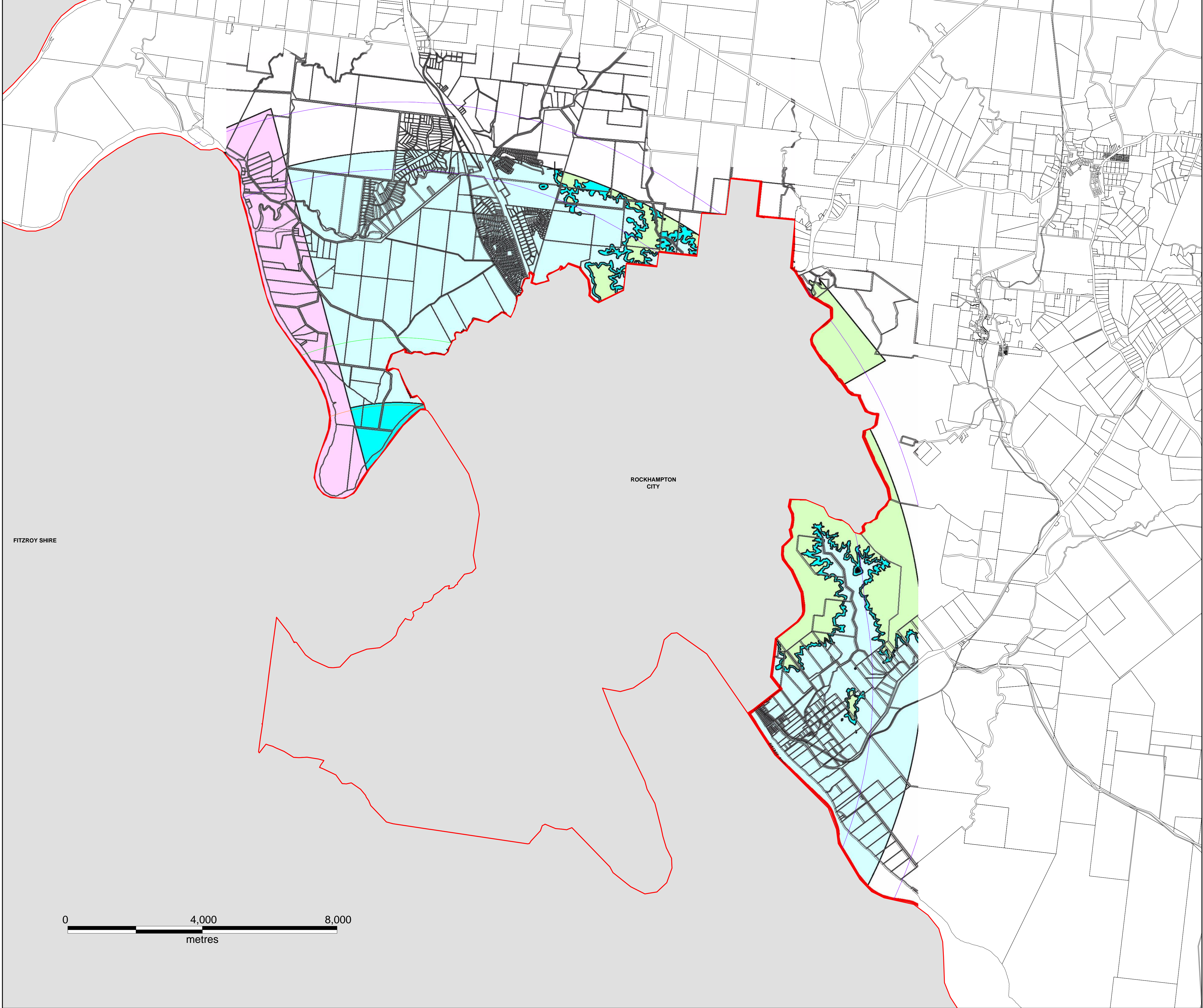
*living for lifestyle*

Planning Scheme Map  
**PSM 8**

Commencement date: 17 October 2005

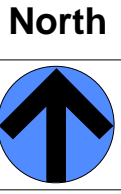






**Building heights in the vicinity  
of Rockhampton Airport**

- A** No building higher than 10 metres above ground level
  - B** No building higher than 15 metres above ground level
  - C** No building higher than 30 metres above ground level
  - D** No building higher than 45 metres above ground level
- Local authority boundary



Source Information: GIS data supplied by Livingstone Shire, 2003.  
Projection: AGD 84, Zone 56



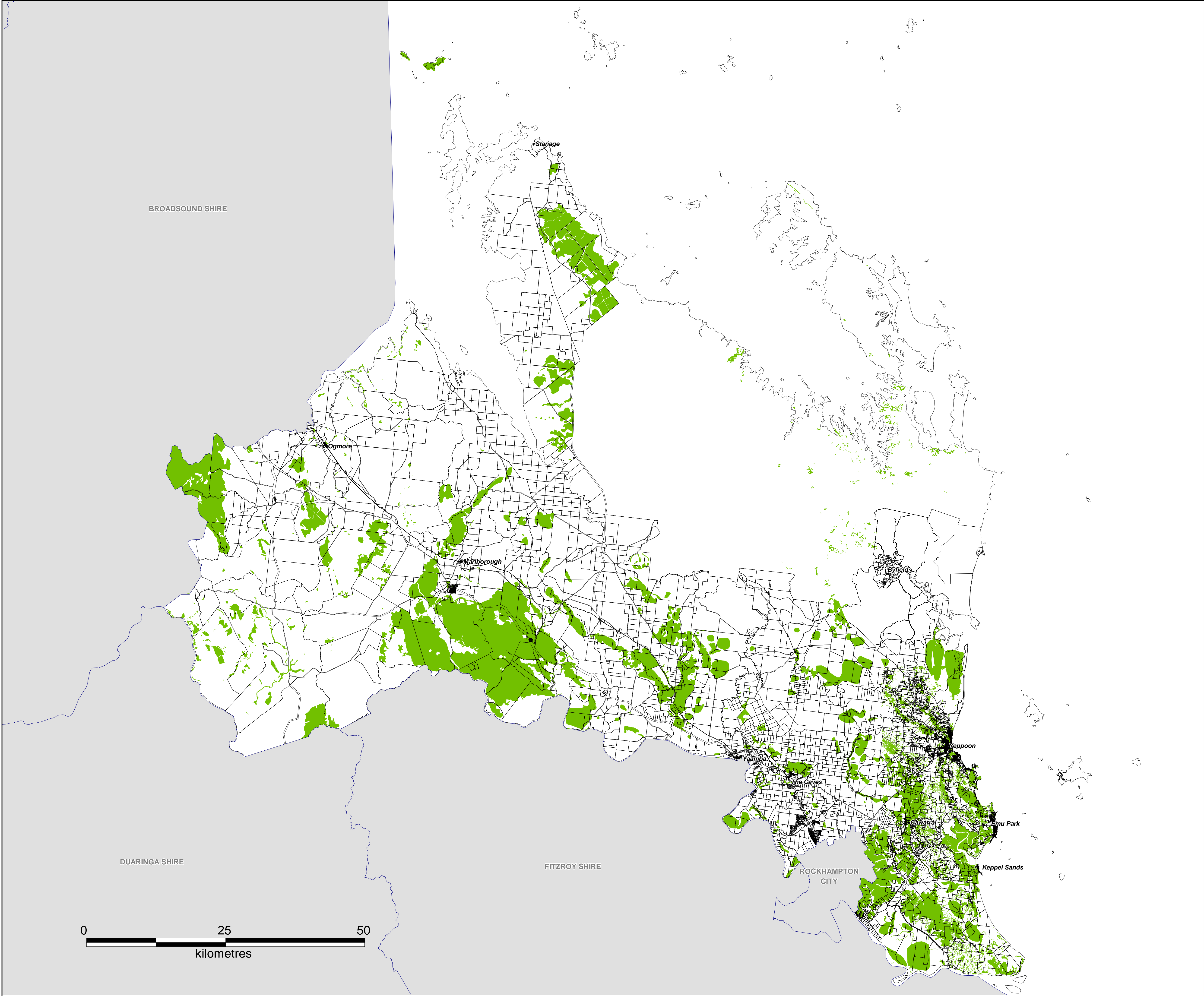
**Planning Scheme 2005**

*living for lifestyle*

**Planning Scheme Map  
PSM 9/1**

Last amendment date: 15 February 2008  
Commencement date: 17 October 2005  
Refer to Planning Scheme 2005 Endnotes for list of all amendments





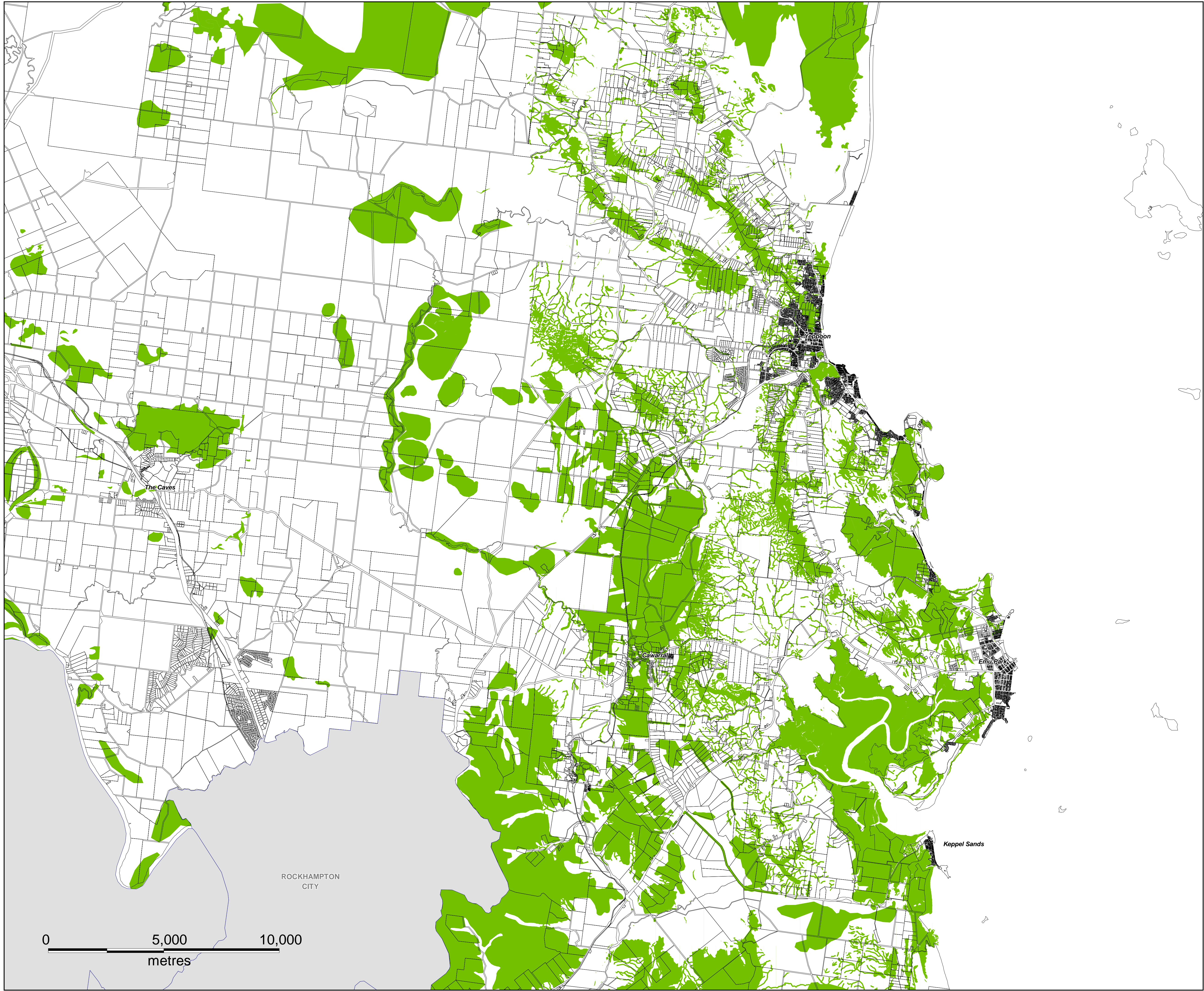
Locally Significant Vegetation

Locally Significant Vegetation



Source Information: GIS data supplied by Livingstone Shire, 2003.  
Projection: AGD 84, Zone 56





Locally Significant Vegetation

Locally Significant Vegetation

North



Source Information: GIS data supplied by Livingstone Shire, 2003.  
Projection: AGD 84, Zone 56



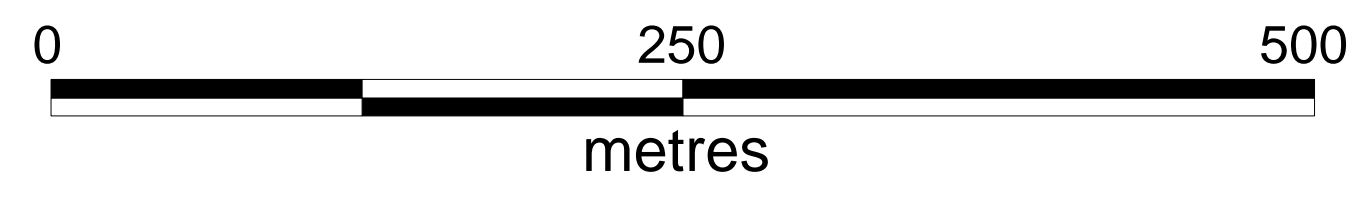
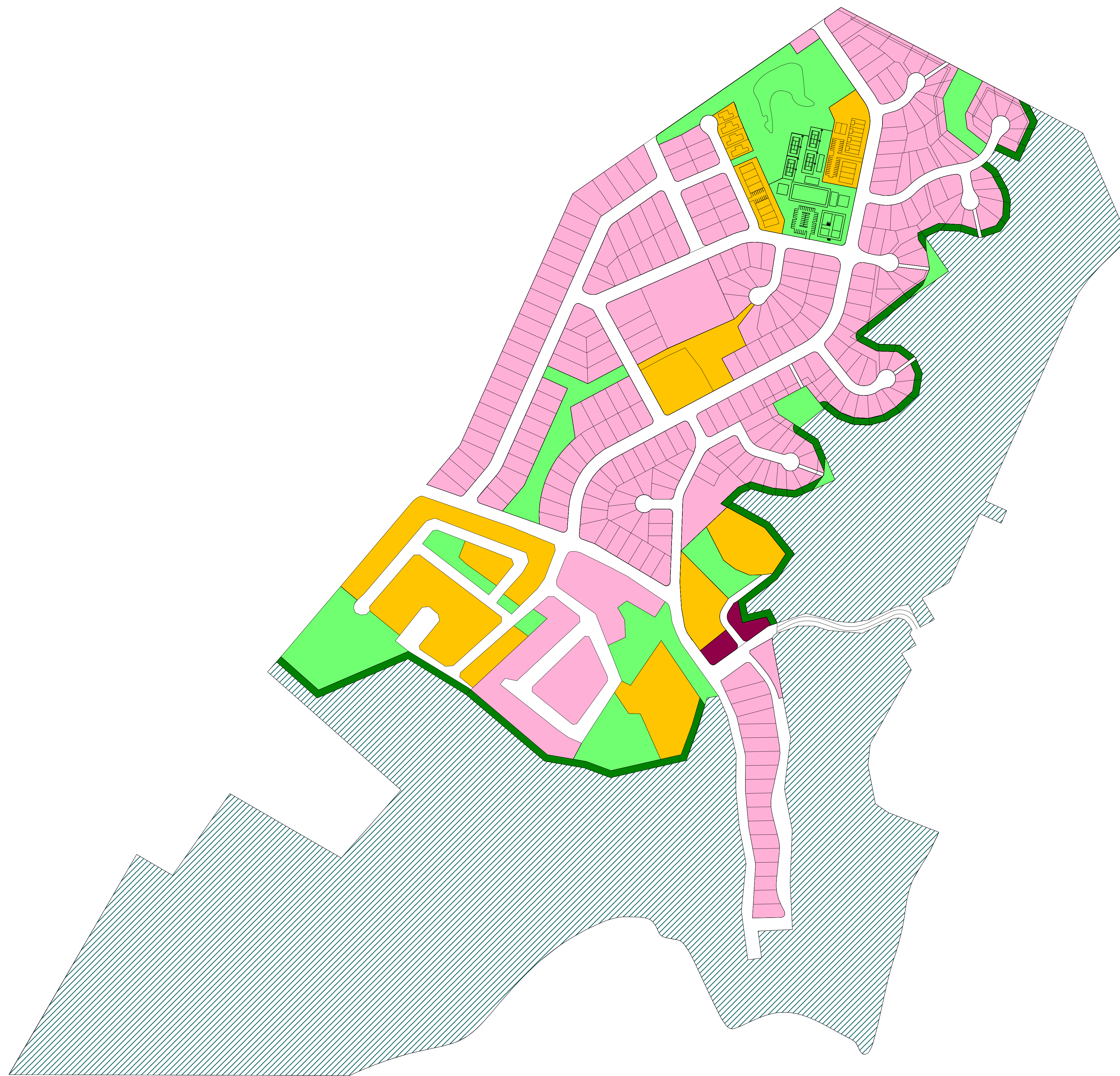
Planning Scheme 2005

*living for lifestyle*







Planning Scheme Map  
**PSM 10B**

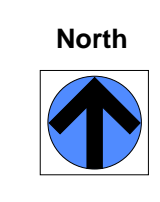
Commencement date: 17 October 2005





Seaspray Stucture Map

-  Residential (Low Density)
-  Residential (Medium Density)
-  Community Village Centre
-  Open Space
-  Vegetation - National Park Buffer
-  National Park



Source Information: GIS data supplied by Livingstone Shire, 2003.  
Projection: AGD 84, Zone 56



LIVINGSTONE  
SHIRE COUNCIL  
SAILING THE FUTURE

Planning Scheme 2005

*living for lifestyle*