

### Special Management Areas

- Protected Areas
- Water Supply Catchment
- Airport Affected Land

### Extractive Resources

- Existing and Potential Resources
- KRA Boundary
- Haulage Route

North

Source Information: GIS data supplied by Livingstone Shire, 2003.  
Projection: AGD 84, Zone 56

Livingstone Shire  
PLANNING AND DEVELOPMENT  
FOR THE FUTURE

## Planning Scheme 2005

*living for lifestyle*

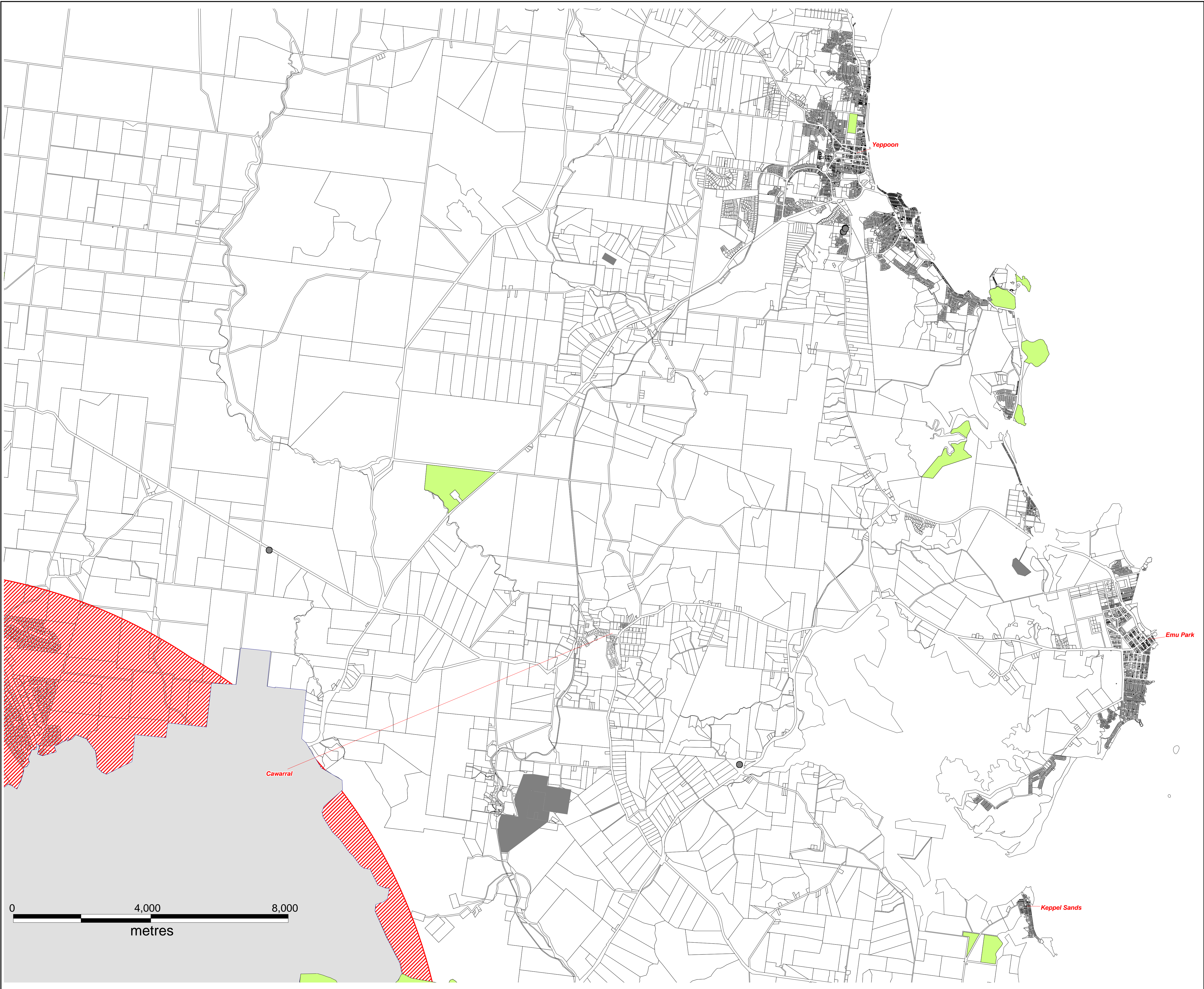
**NOTE:**  
This compiled map O1A shows special management areas information effective from 24 February 2009.  
It has been compiled from:

Map O1A - commenced 17 October 2005  
Map O1A/1 - commenced 24 February 2009

**COMPILED**  
Overlay Map  
**O1A**

Commencement date: 24 February 2009



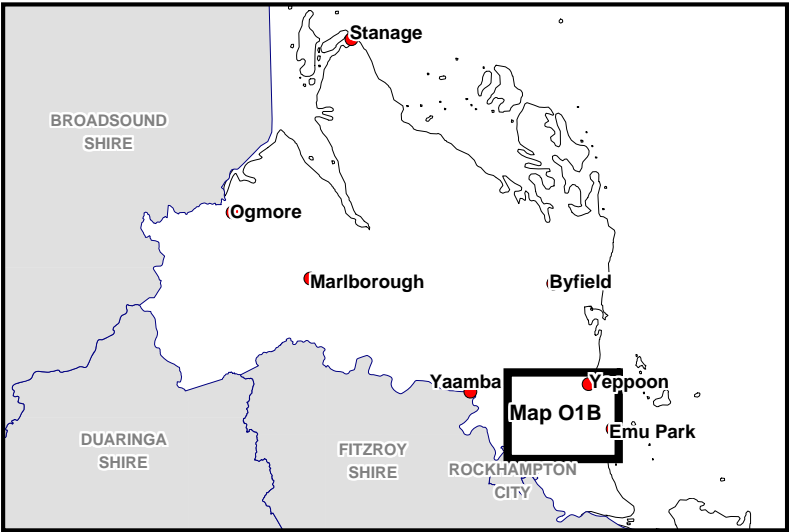


Special Management Areas

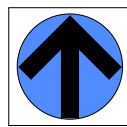
- Protected Areas
- Water Supply Catchment
- Airport Affected Land

Extractive Resources

- Existing and Potential Resources
- KRA Boundary
- Haulage Route



North



Source Information: GIS data supplied by Livingstone Shire, 2003.  
Projection: AGD 84, Zone 56



Planning Scheme 2005

*living for lifestyle*

NOTE:  
This compiled map O1B shows special management  
areas information effective from 24 February 2009.  
It has been compiled from:

Map O1B - commenced 17 October 2005  
Map O1B/1 - commenced 24 February 2009

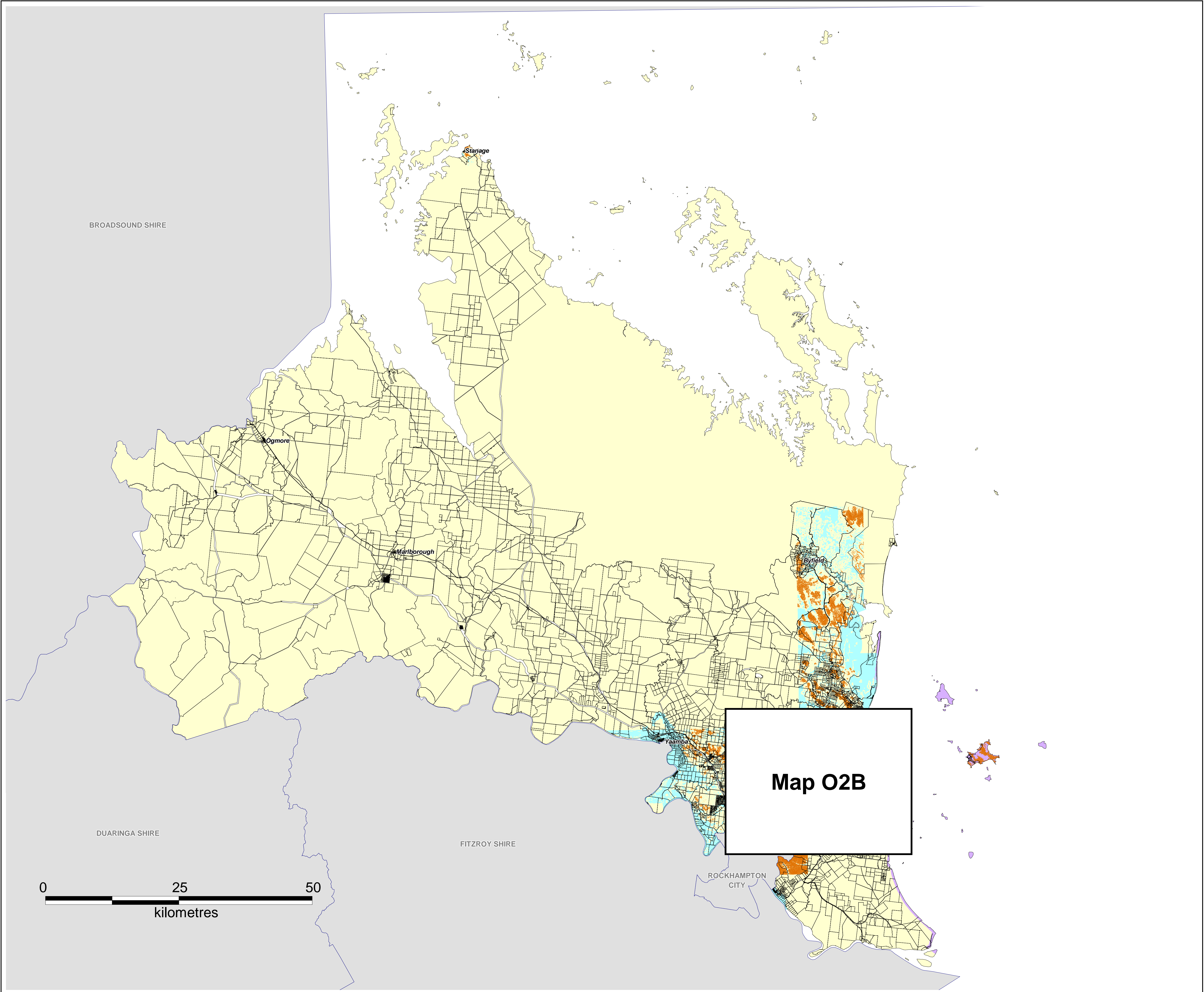
COMPILED

Overlay Map

O1B

Commencement date: 24 February 2009





Special Management Areas

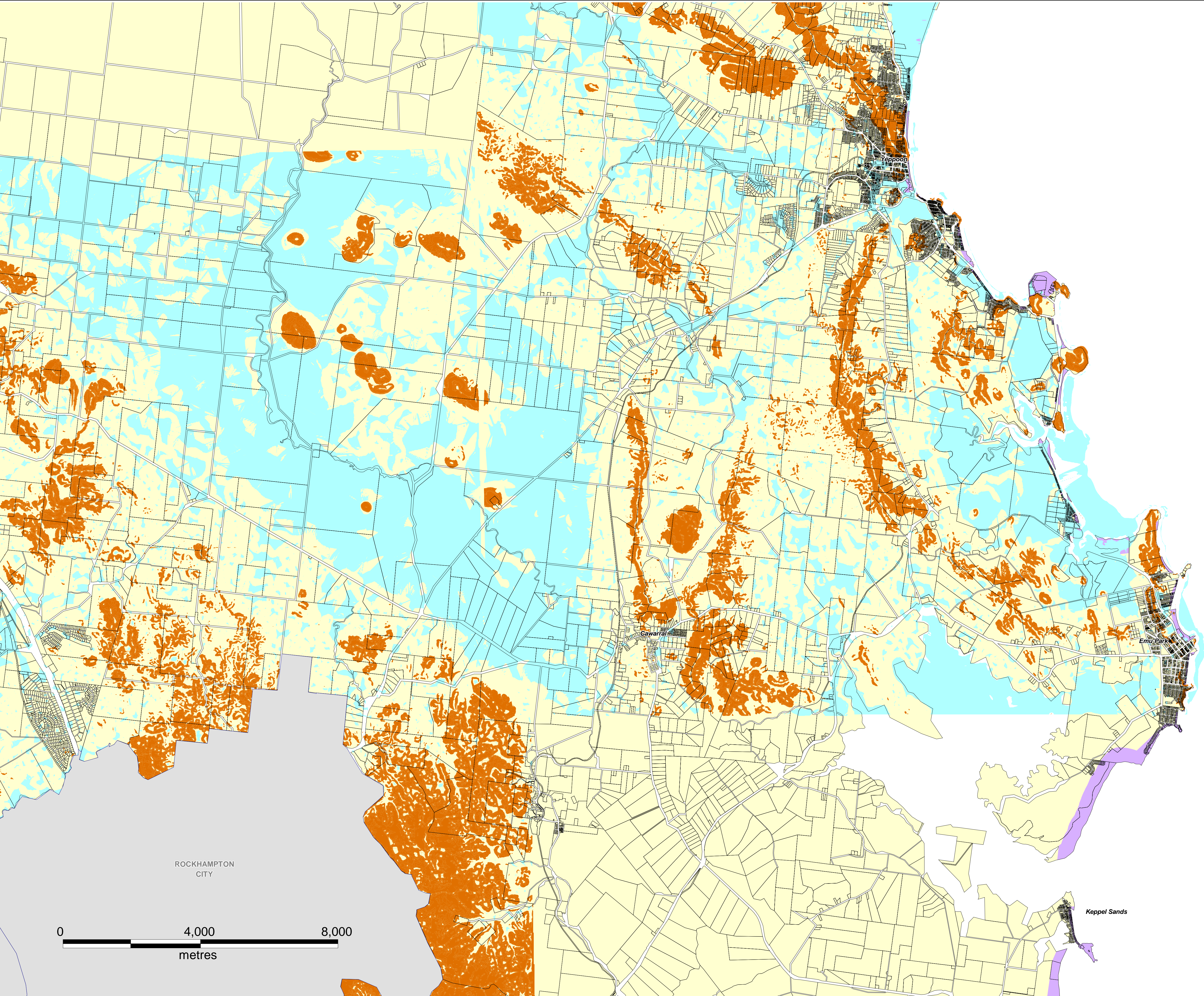
- Known areas of:**
- Drainage Problem
  - Erosion Prone Land
  - Steep Land
- Areas in which data is unavailable:**
- In these areas land may be subject to drainage problem, excessive steepness or prone to erosion. Determination of these constraints would have to be confirmed through site survey.

Map O2B

North

Source Information: GIS data supplied by Livingstone Shire, 2003.  
Projection: AGD 84, Zone 56





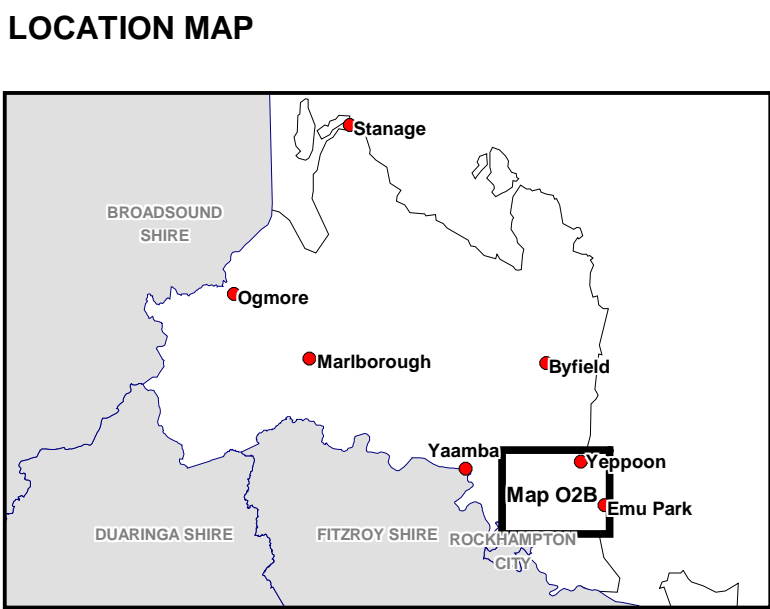
**Special Management Areas**

**Known areas of:**

- Drainage Problem
- Erosion Prone Land
- Steep Land

**Areas in which data is unavailable:**

In these areas land may be subject to drainage problem, excessive steepness or prone to erosion. Determination of these constraints would have to be confirmed through site survey.



**North**

Source Information: GIS data supplied by Livingstone Shire, 2003. AGD 84, Zone 56

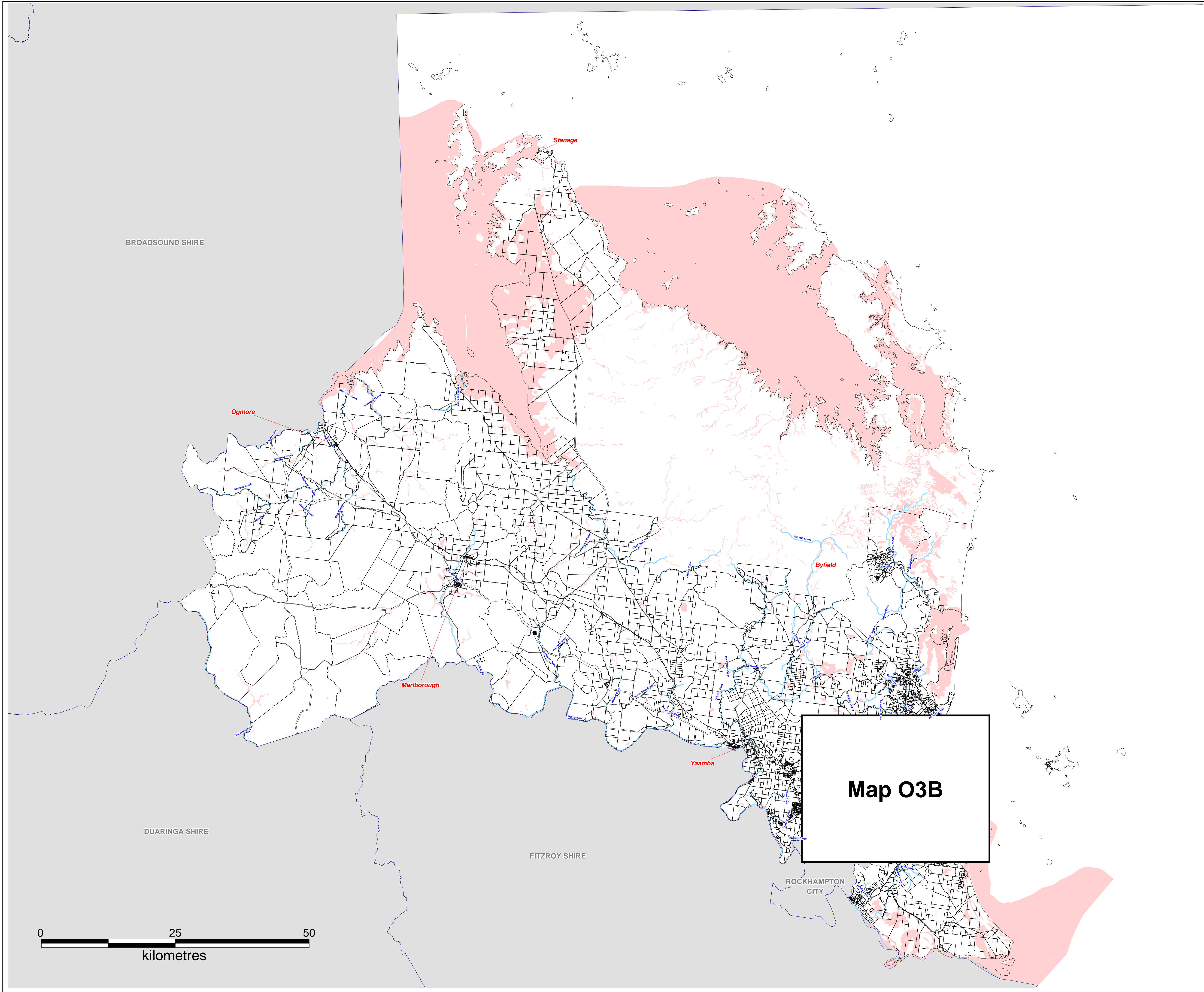
**Planning Scheme 2005**

*Living for lifestyle*



**Overlay Map O2B**

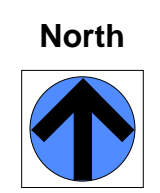
Commencement date: 17 October 2005





**Special Management Areas**

-  Wetlands
-  Waterways



Source Information: GIS data supplied by Livingstone Shire, 2003.  
Projection: AGD 84, Zone 56



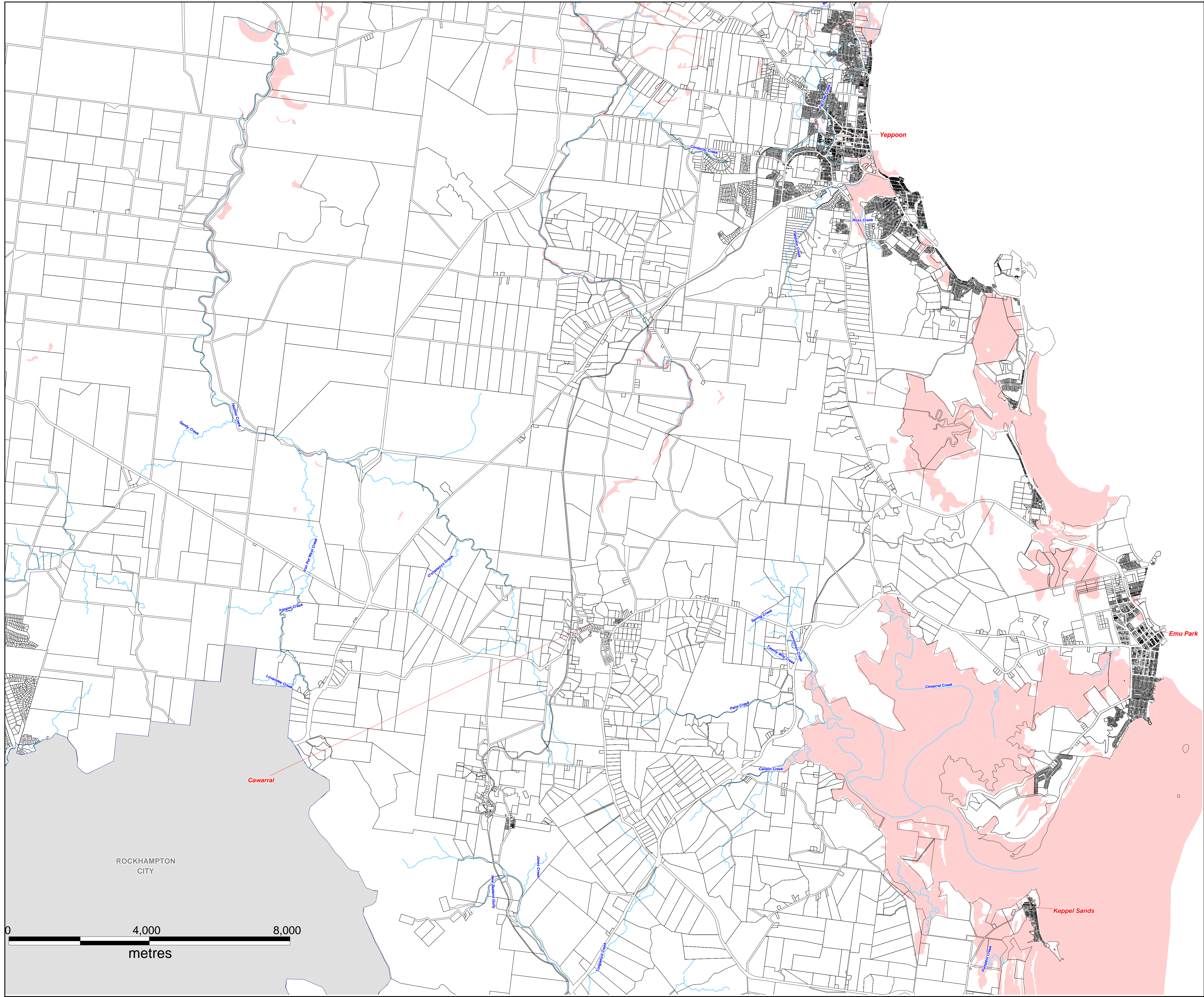
**Planning Scheme 2005**

*living for lifestyle*

Overlay Map  
**O3A/1**

Last amendment date: 15 February 2008  
Commencement date: 17 October 2005  
Refer to Planning Scheme 2005 Endnotes for list of all amendments

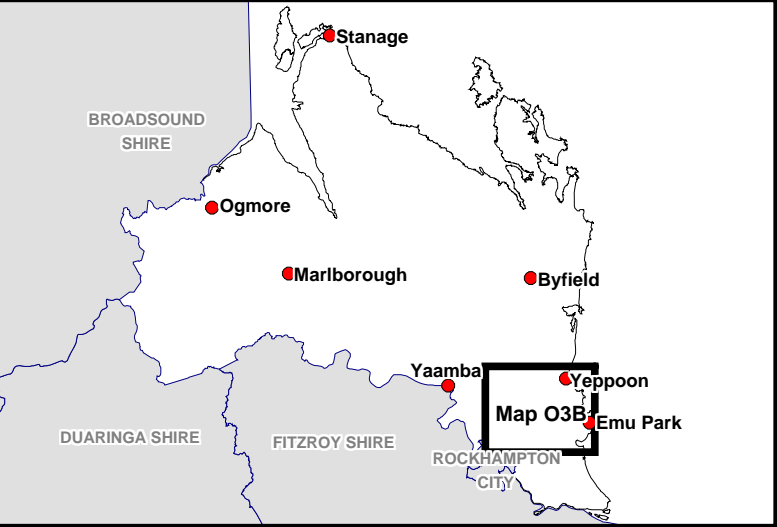




Special Management Areas

- Wetlands
- Waterways

LOCATION MAP



North



Source Information: GIS data supplied by Livingstone Shire, 2003. Projection: AGD 84, Zone 56



Planning Scheme 2005

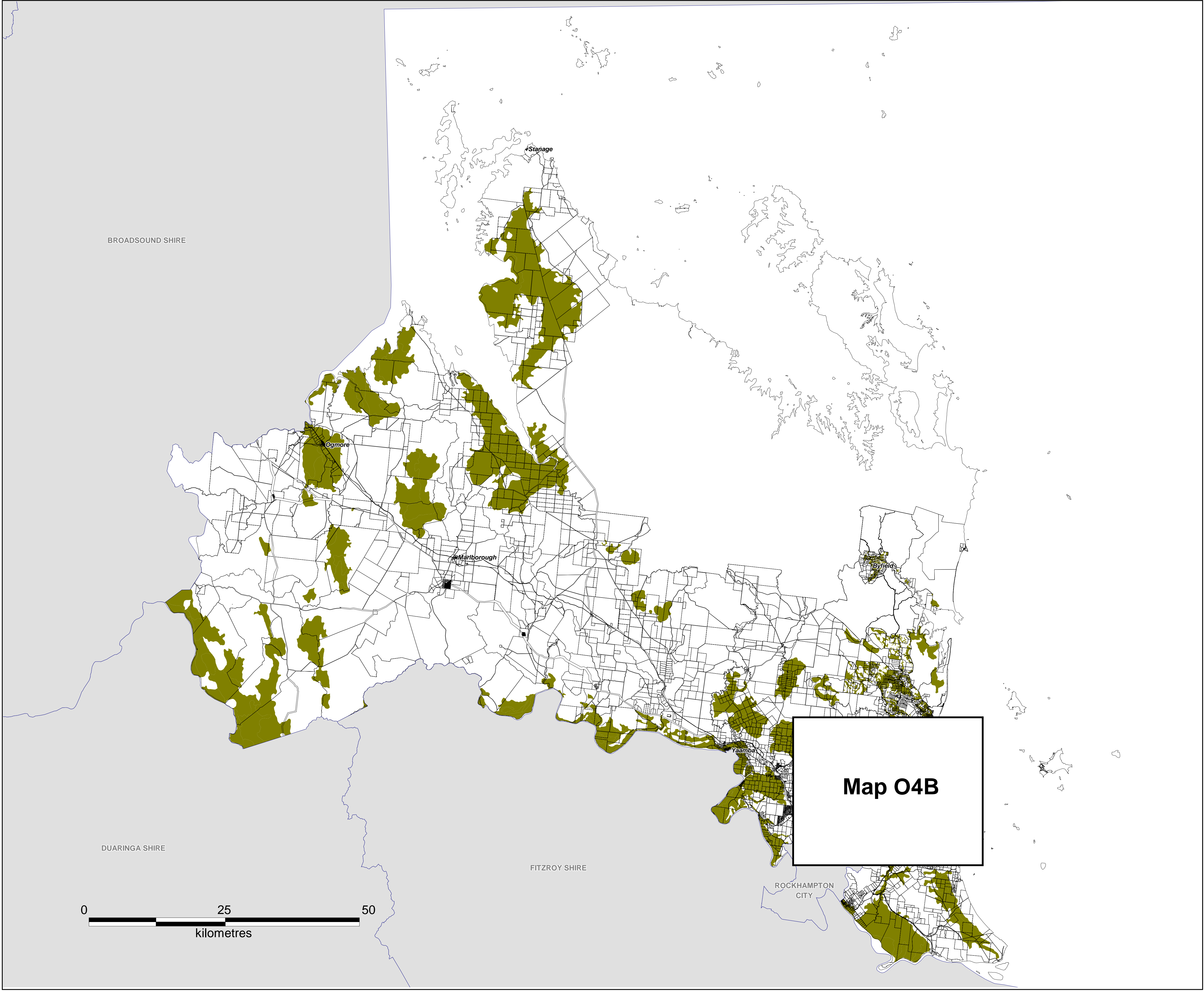
*living for lifestyle*

Overlay Map


**O3B/1**

Last amendment date: 15 February 2006  
Commencement date: 17 October 2005  
Refer to Planning Scheme 2005 Endnotes for list of all amendments





**Special Management Areas**

 Good Quality Agricultural Land



Source Information: GIS data supplied by Livingstone Shire, 2003.  
Projection: AGD 84, Zone 56



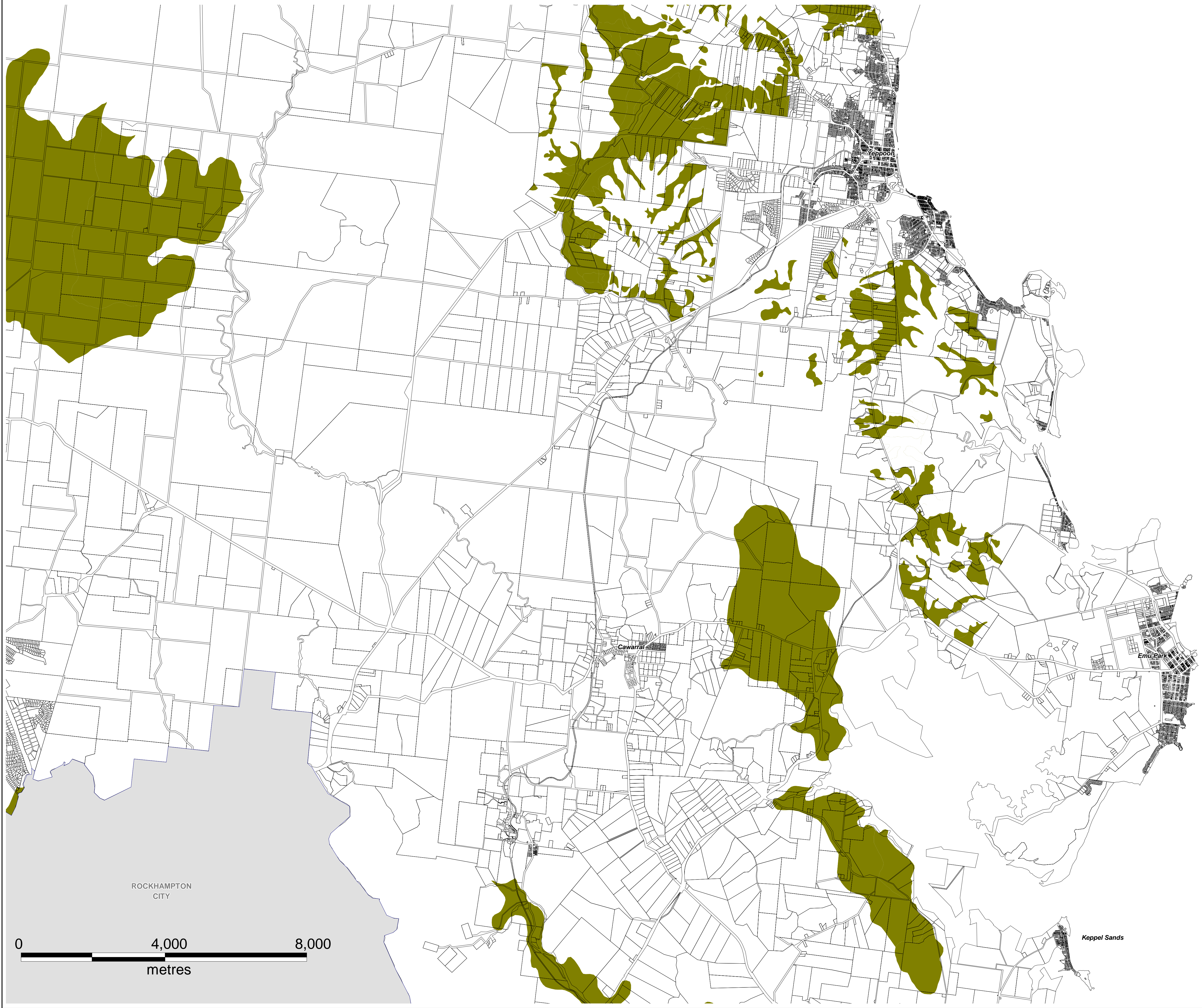
**Planning Scheme 2005**

*living for lifestyle*

Overlay Map  
**O4A**

Commencement date: 17 October 2005

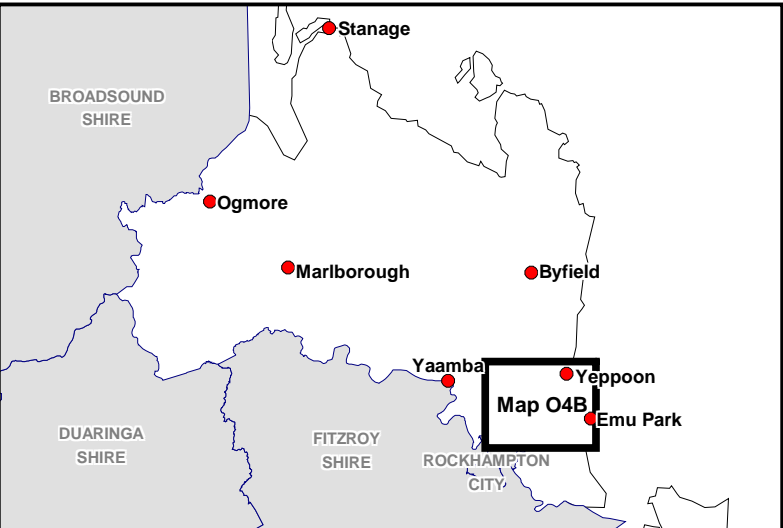




Special Management Areas

Good Quality Agricultural Land

LOCATION MAP



North

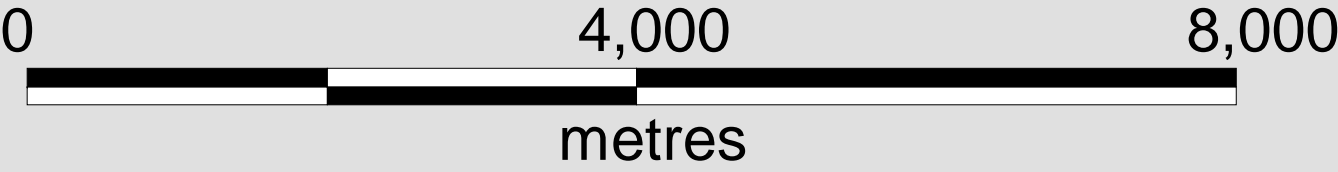


Source Information: GIS data supplied by Livingstone Shire, 2003.  
Projection: AGD 84, Zone 56



Planning Scheme 2005

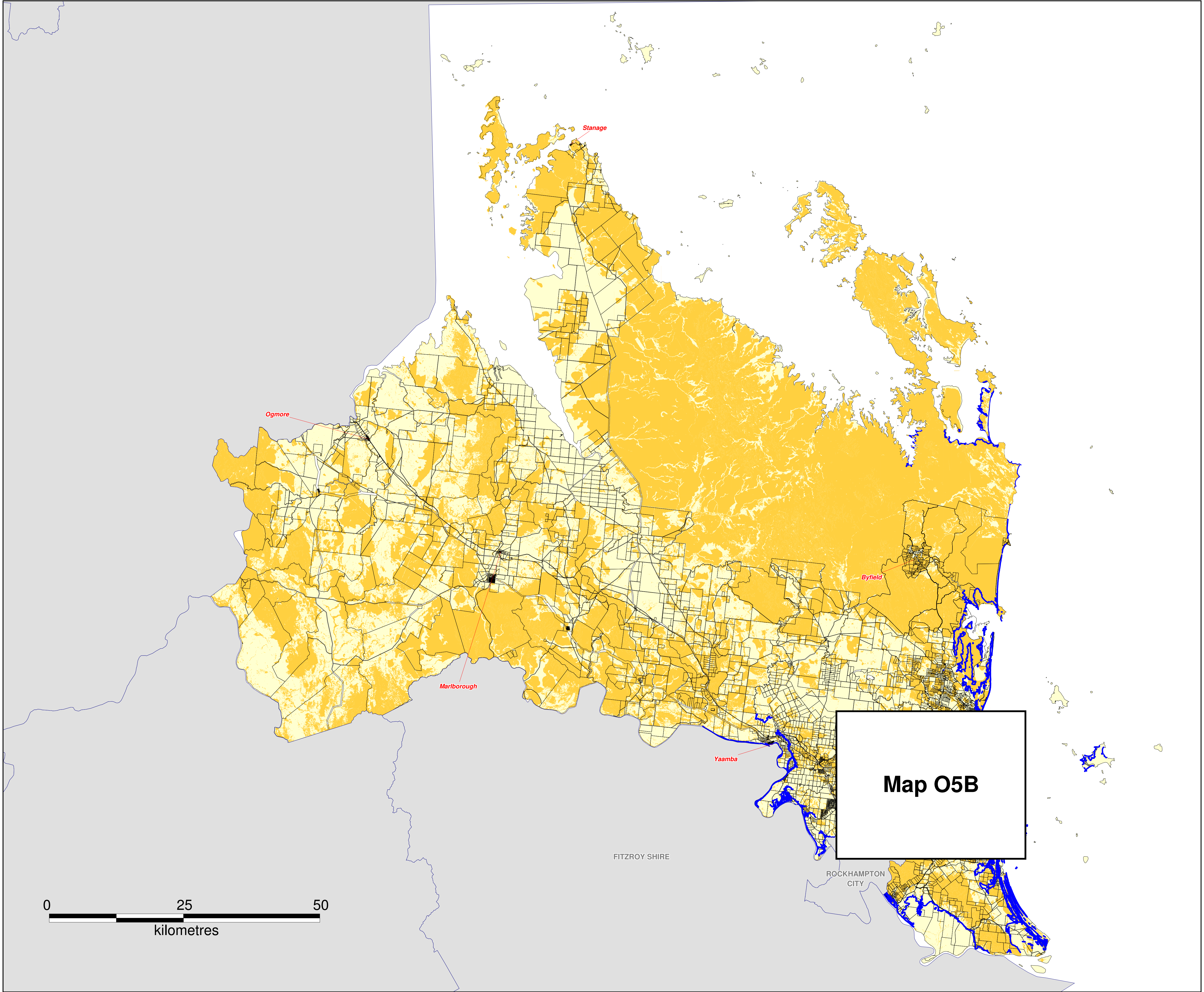
*living for lifestyle*



Overlay Map  
**O4B**

Commencement date: 17 October 2005





Special Management Areas

Known areas of:

- Storm Tide Hazard
- Bushfire Hazard

Areas in which data is unavailable:

In these areas land may be subject to storm surge and/or bushfire hazard. Determination of these constraints would have to be confirmed through site survey.

North



Source Information: GIS data supplied by Livingstone Shire, 2003. Projection: AGD 84, Zone 56



Planning Scheme 2005

*living for lifestyle*

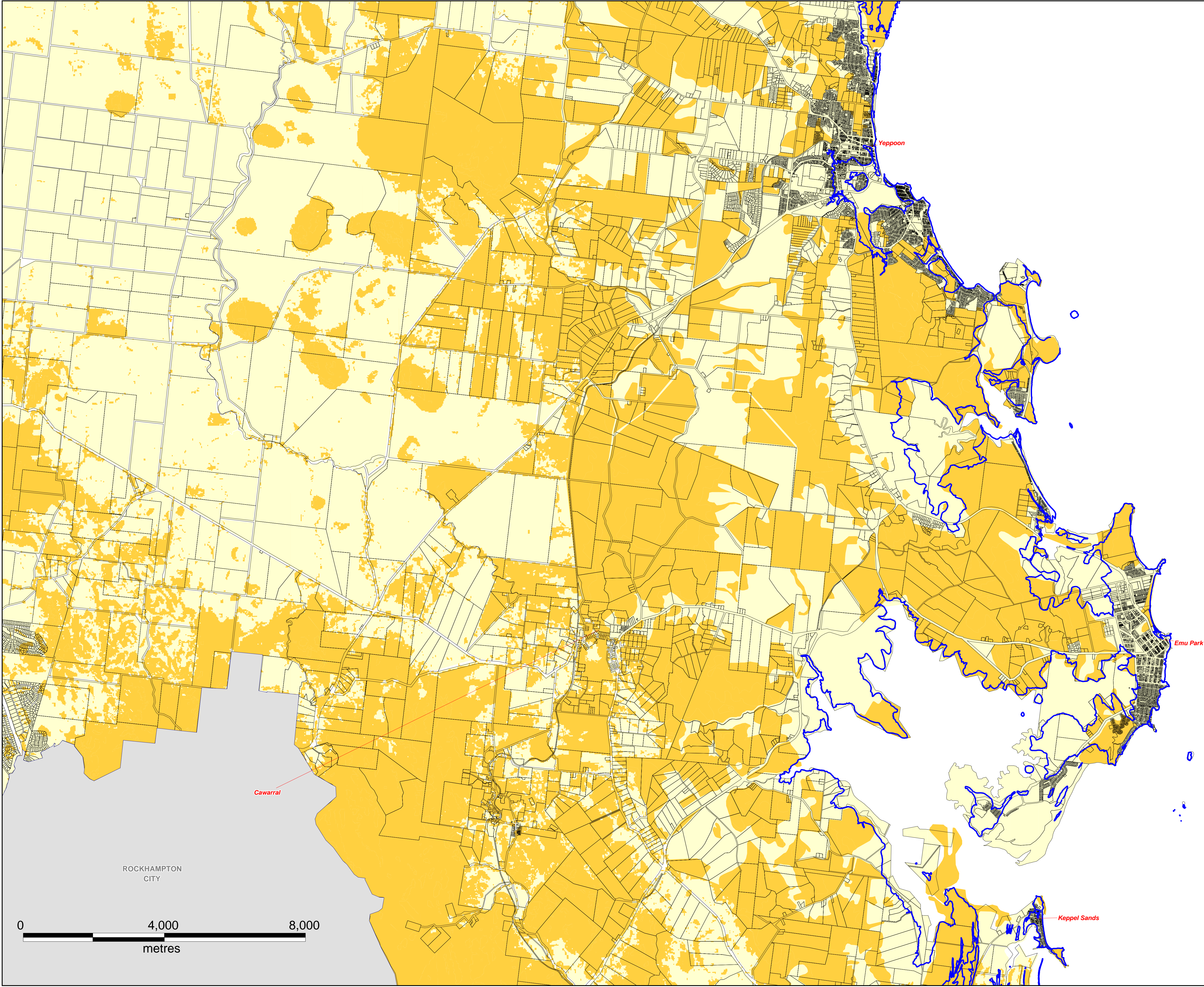
NOTE:  
This compiled map O5A shows overlay information effective from 24 February 2009. It has been compiled from:

Map O5A - commenced 17 October 2005  
Map O5A1 - commenced 31 January 2006  
Map O5A2 - commenced 24 February 2009.

COMPILED  
Overlay Map  
**O5A**

Commencement date: 24 February 2009.

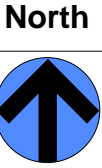
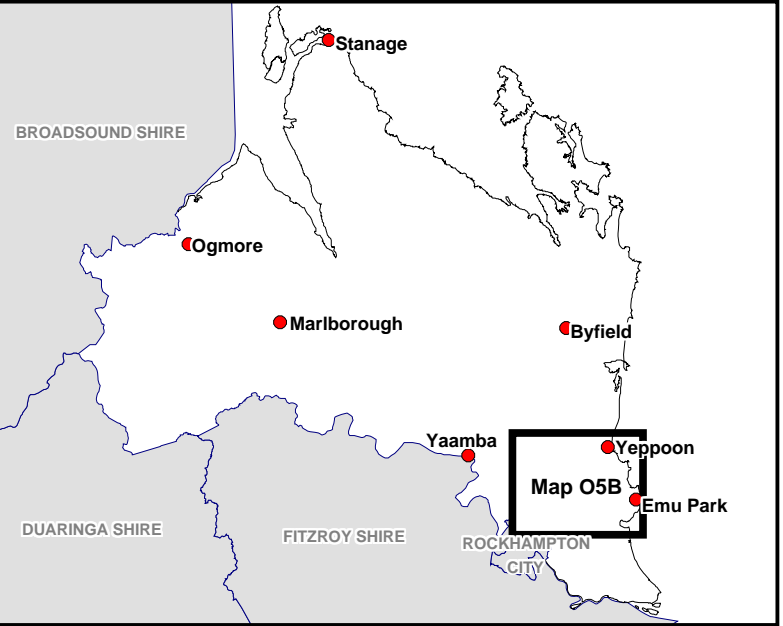




Special Management Areas

- Known areas of:**
- Storm Tide Hazard
  - Bushfire Hazard
- Areas in which data is unavailable:**
- In these areas land may be subject to storm surge and/or bushfire hazard. Determination of these constraints would have to be confirmed through site survey.

LOCATION MAP



Source Information: GIS data supplied by Livingstone Shire, 2003.  
Projection: AGD 84, Zone 56



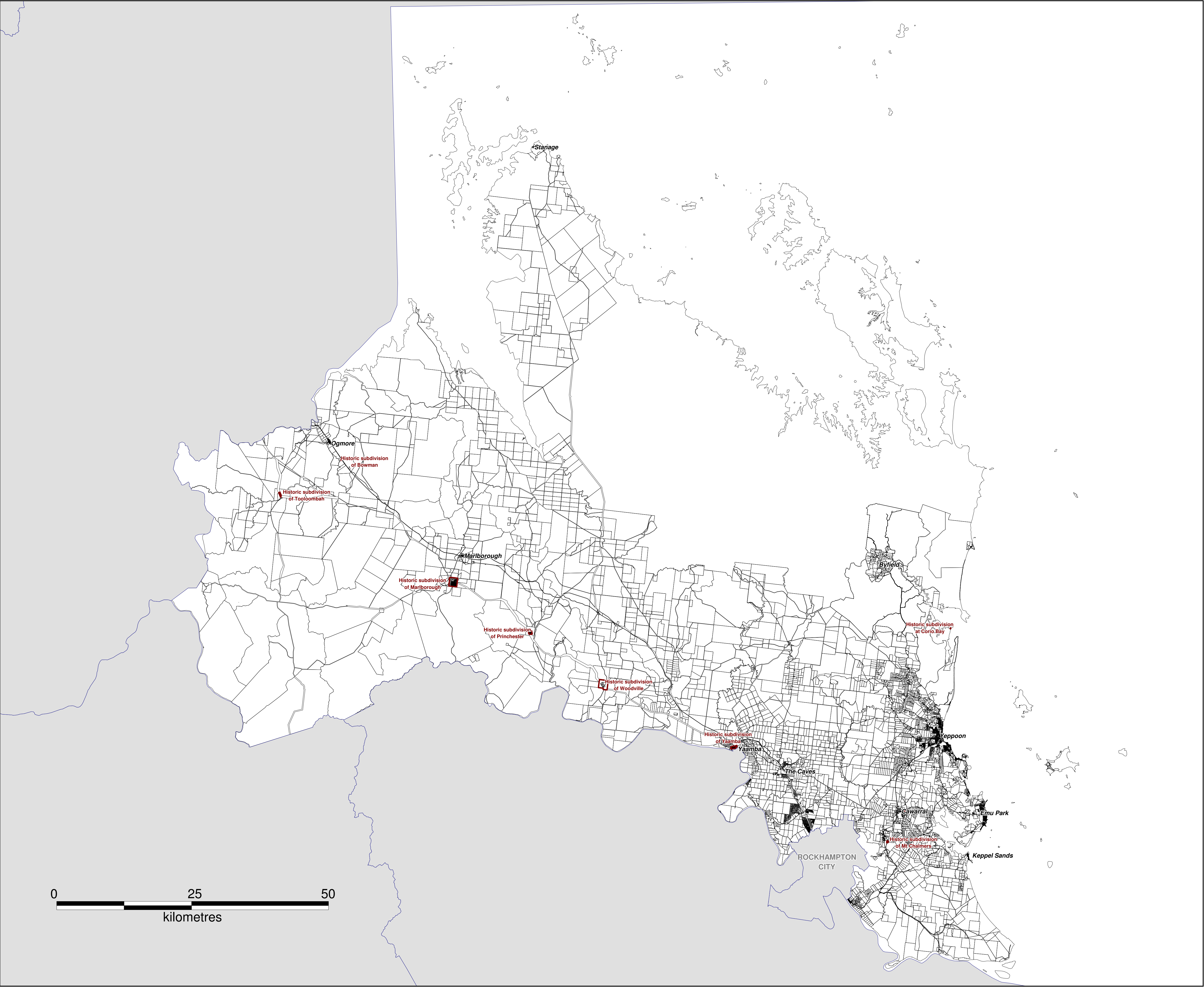
**NOTE:**  
This compiled map O5B shows overlay information effective from 24 February 2009. It has been compiled from:

Map O5B - commenced 17 October 2005  
Map O5B/1 - commenced 31 January 2009  
Map O5B/2 - commenced 24 February 2009

**COMPILED**  
**Overlay Map**  
**O5B**

Commencement date: 24 February 2009





Special Management Areas

Historic Townships -  
Refer to Overlay Map 06B



Source Information: GIS data supplied by Livingstone Shire, 2003.  
Projection: AGD 84, Zone 56



Planning Scheme 2005

*living for lifestyle*

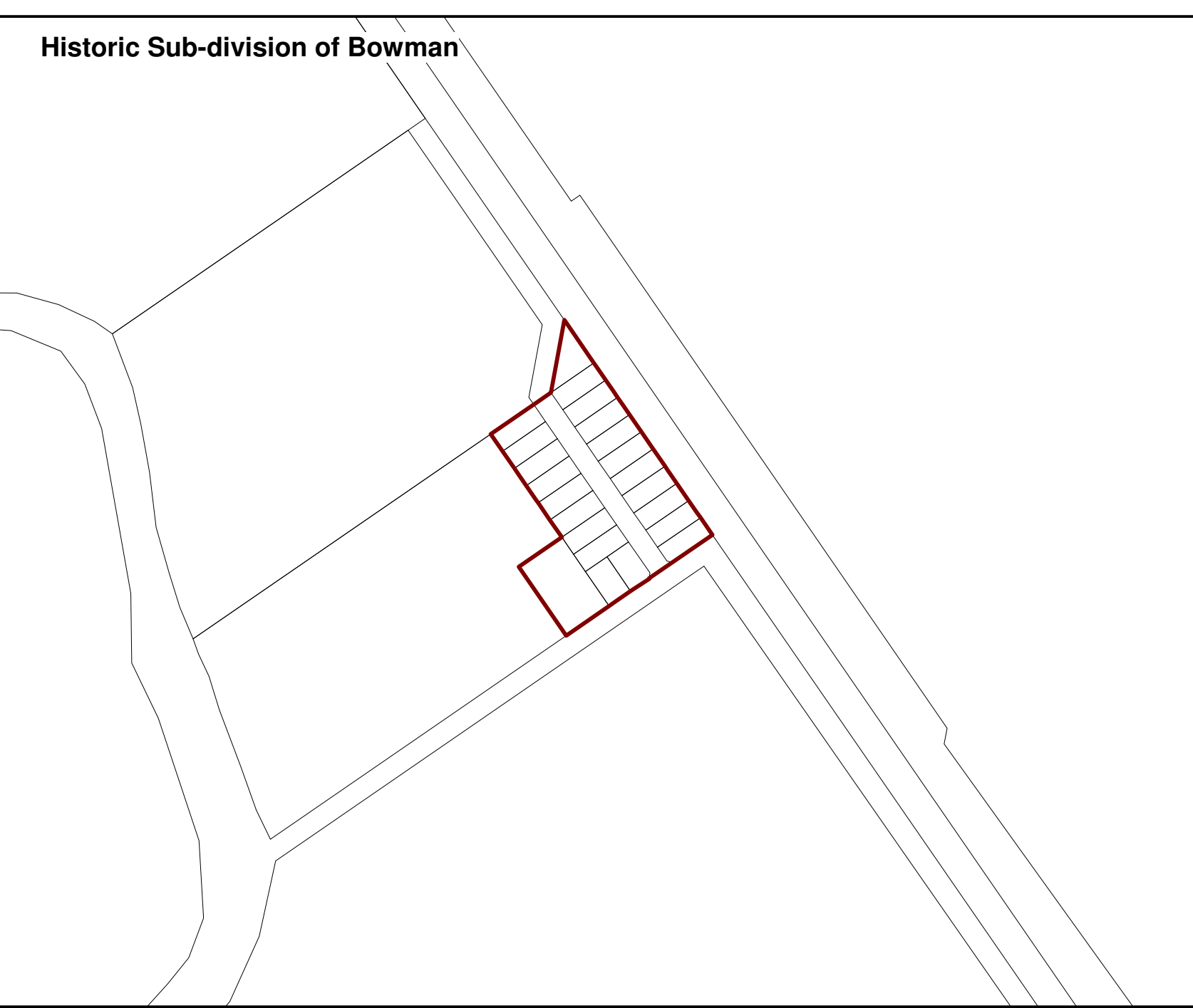
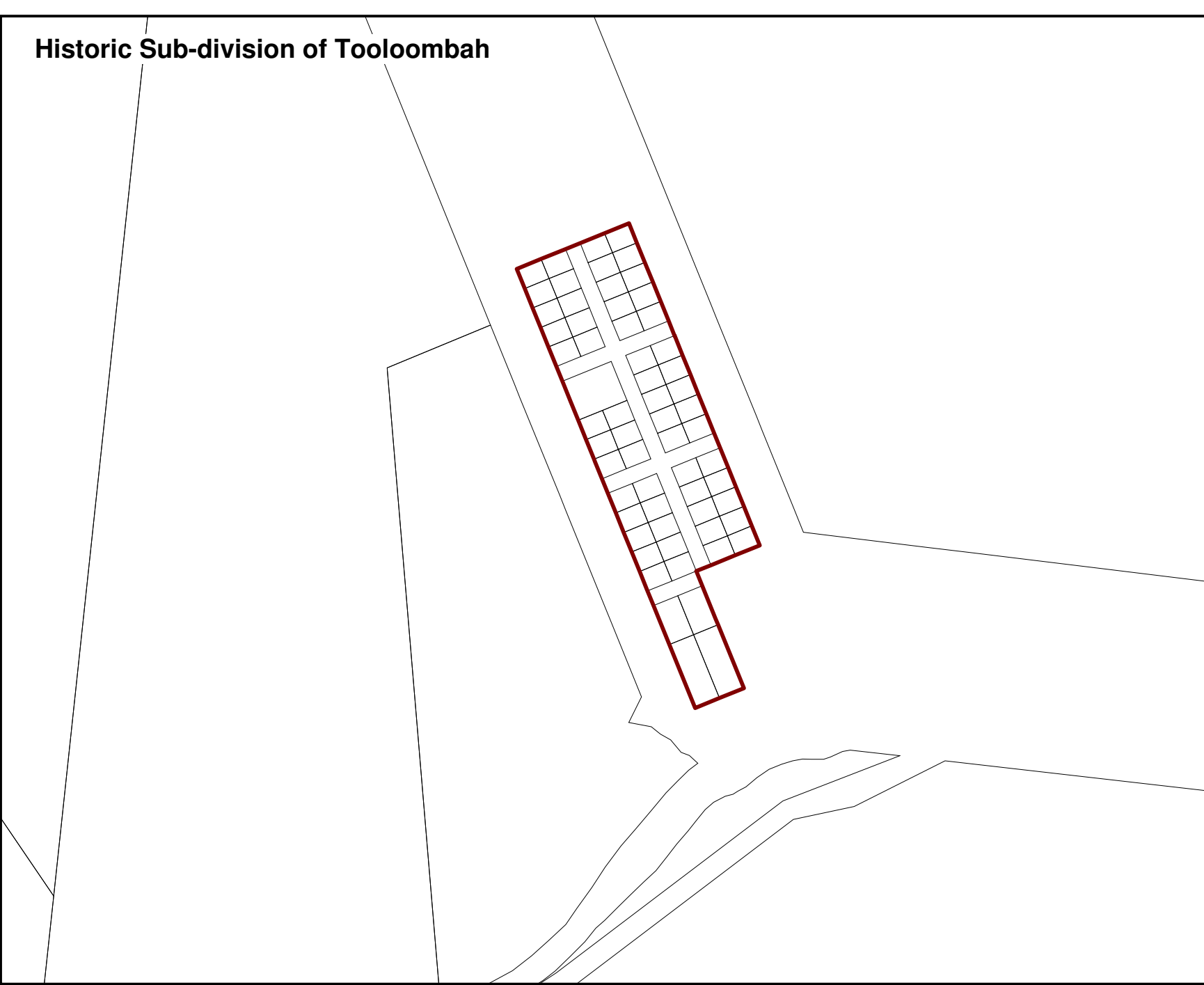
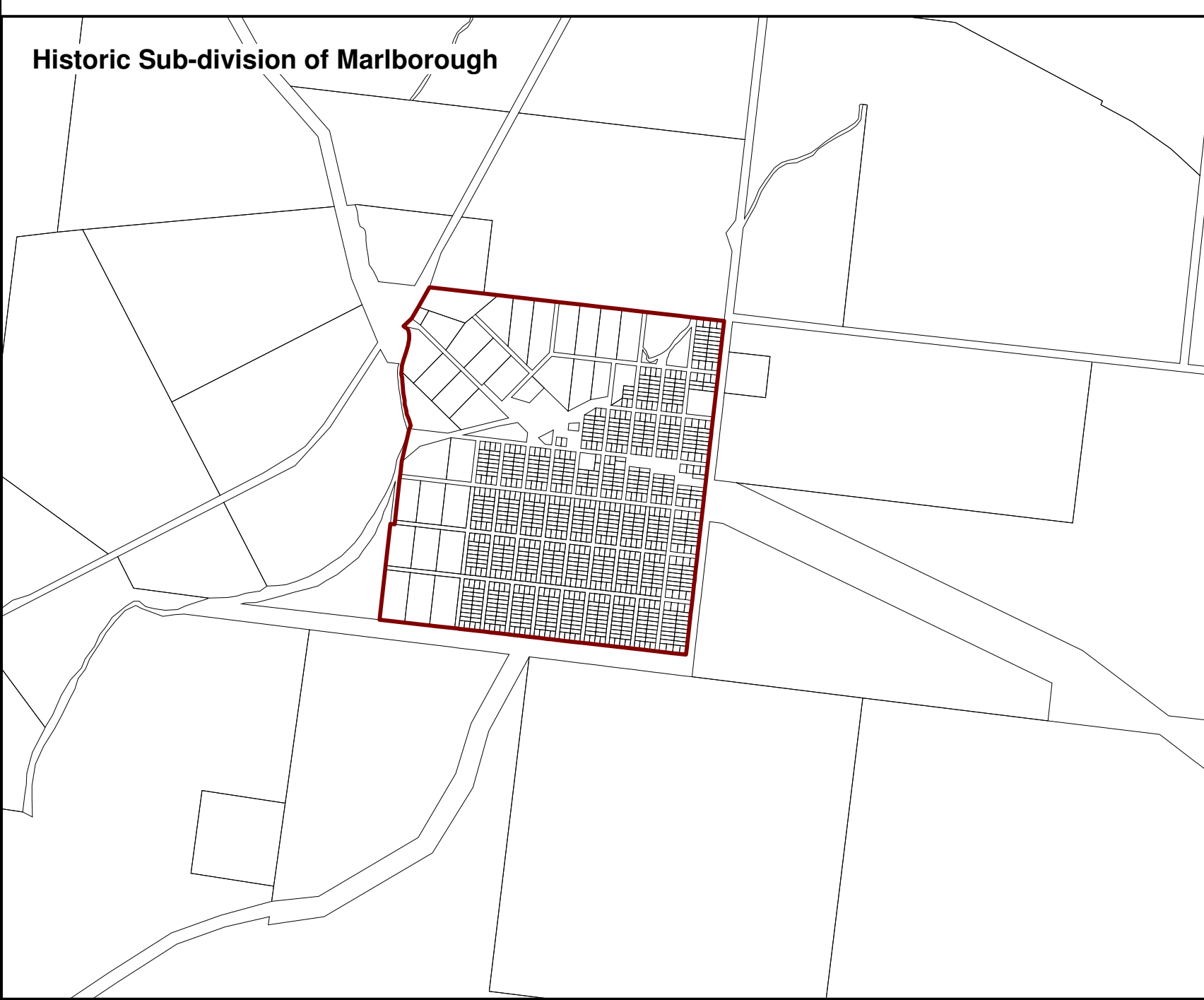
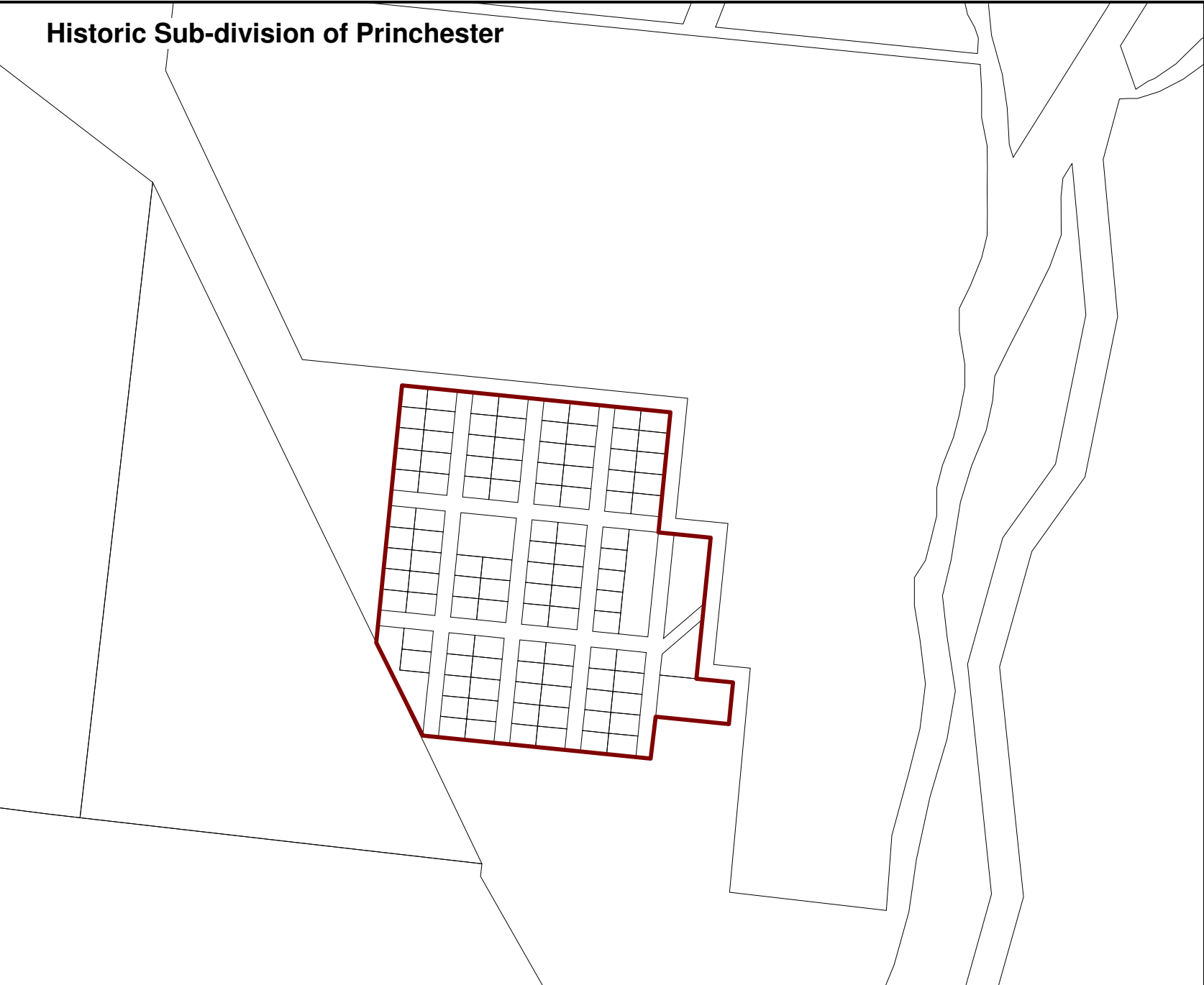
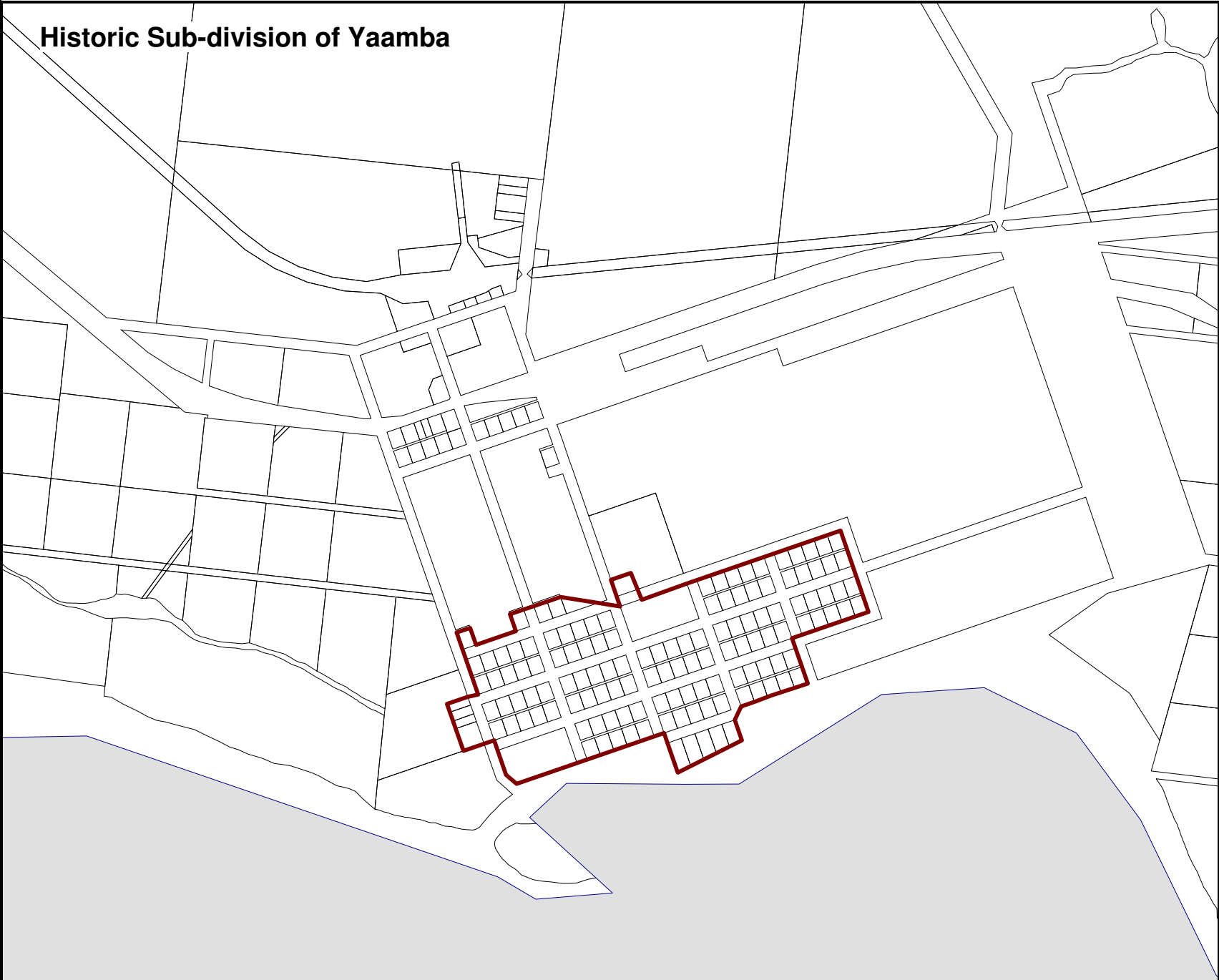
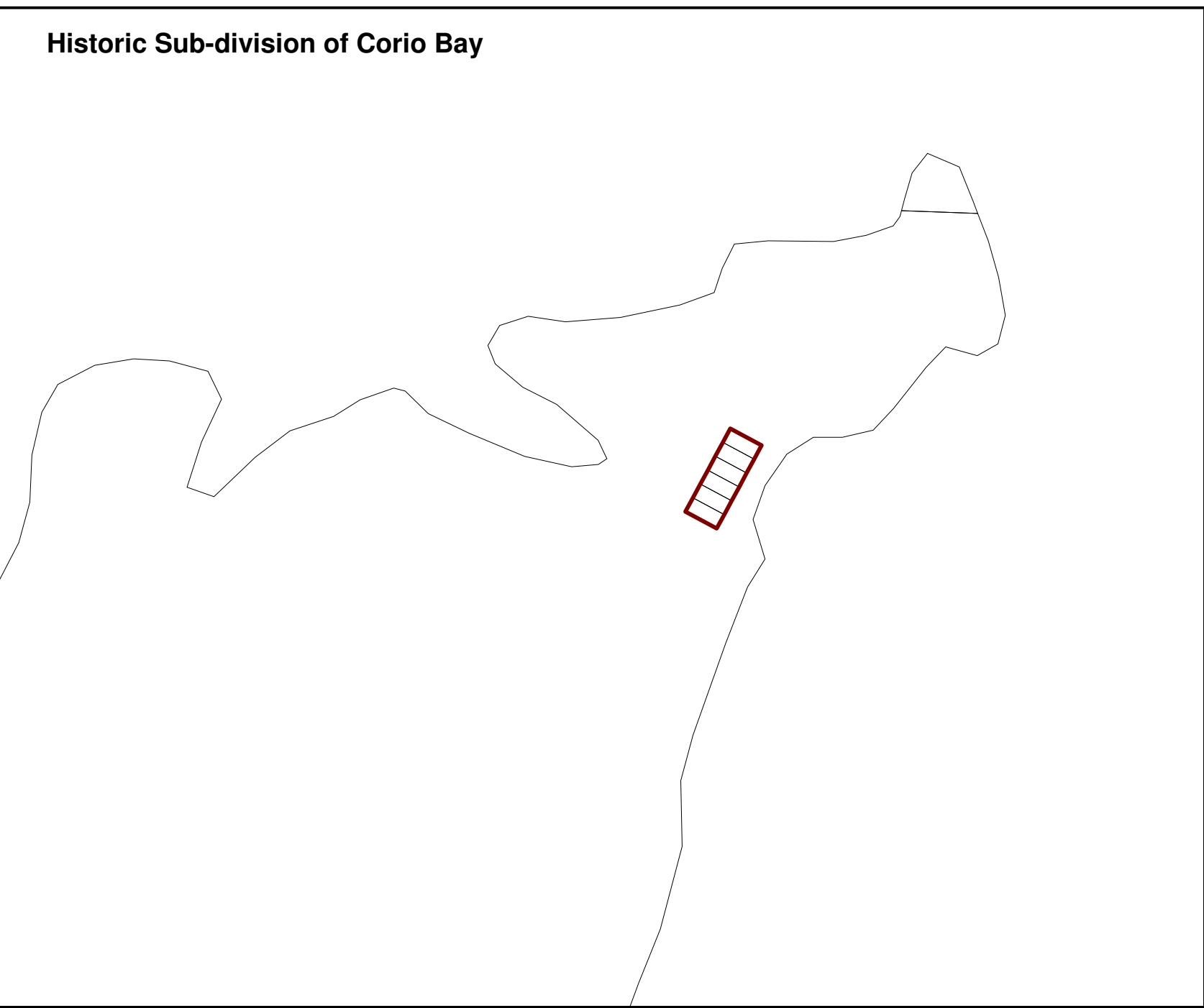
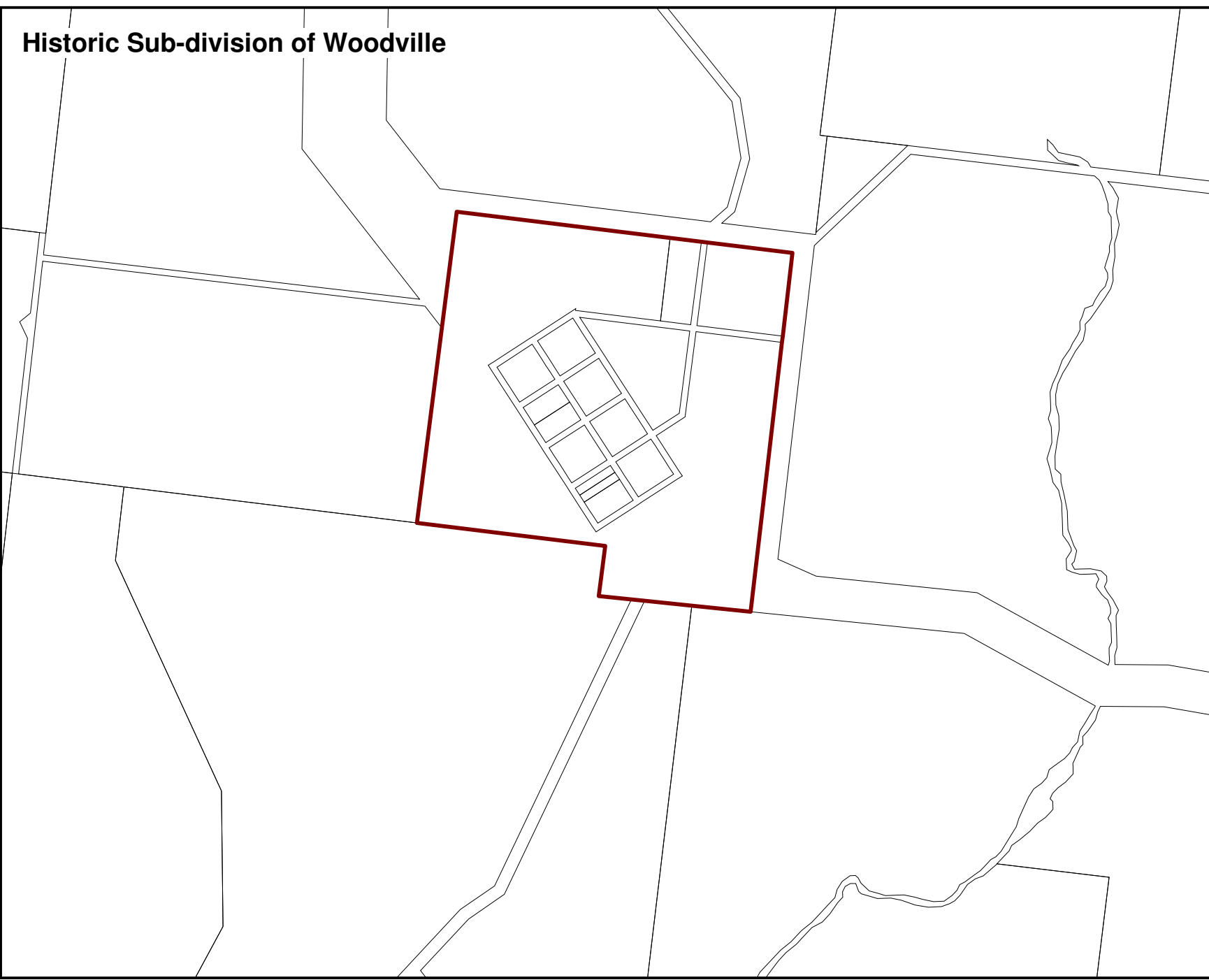
NOTE:  
This compiled map O6A shows special management  
areas information effective from 24 February 2009.  
It has been compiled from:

O6A - commenced 17 October 2005  
O6A/1 - commenced 24 February 2009

**COMPILED**  
Overlay Map  
**O6A**

Commencement date: 24 February 2009.

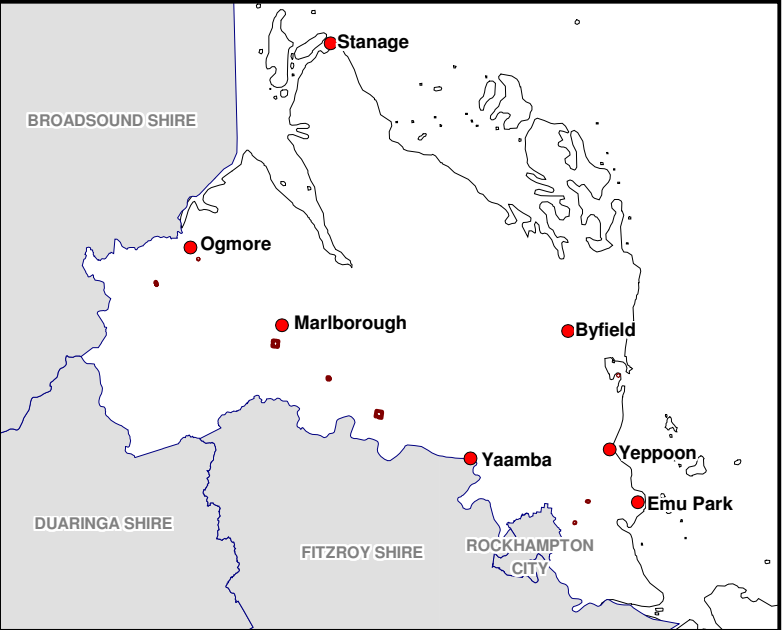




Special Management Areas

Historic Townships

LOCATION MAP



North



NOT TO SCALE

Source Information: GIS data supplied by Livingstone Shire, 2003.  
Projection: AGD 84, Zone 56



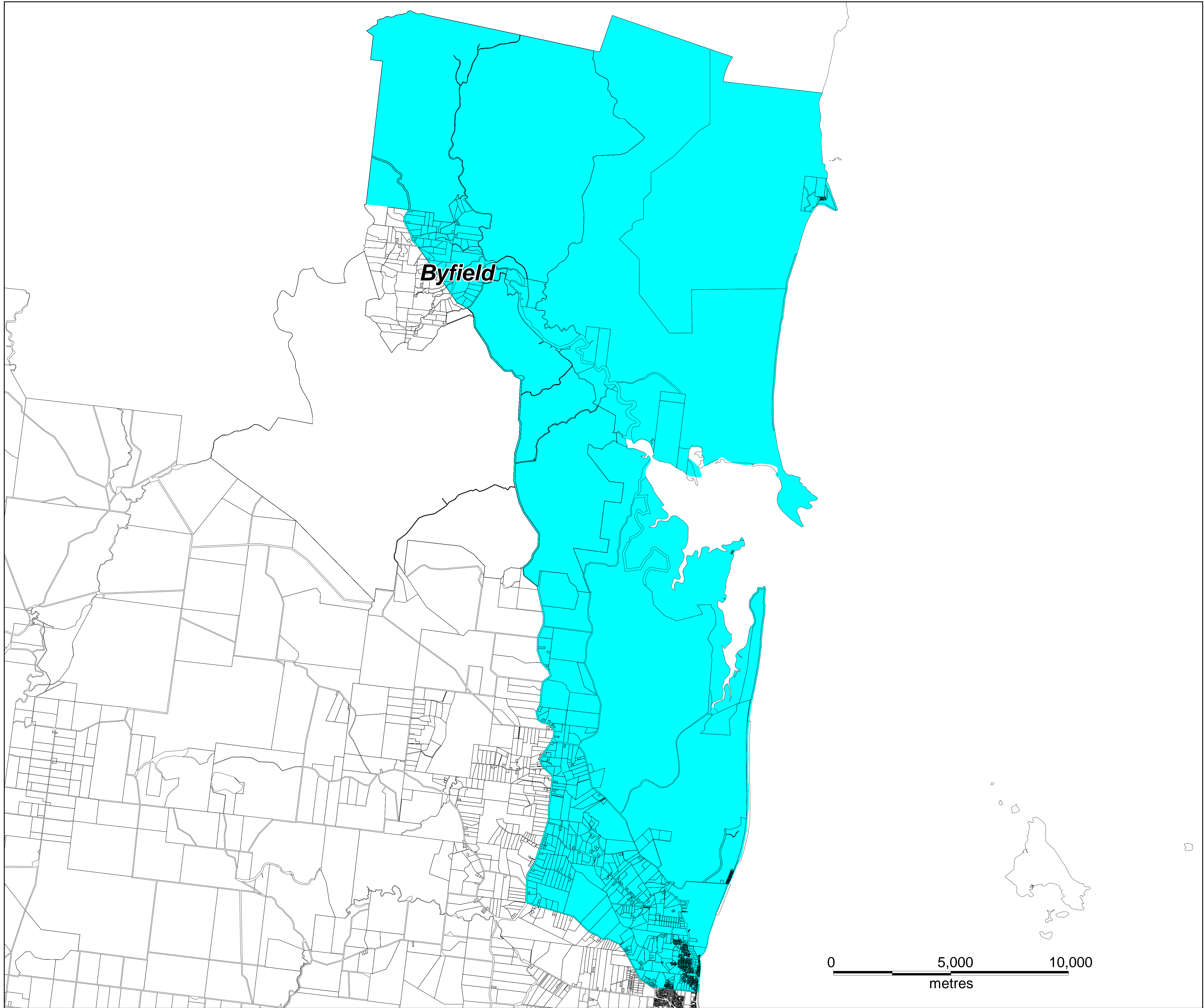
NOTE:  
This compiled map O6B shows special management areas information effective from 24 February 2009. It has been compiled from:

Map O6B - commenced 17 October 2005  
Map O6B/1 - commenced 24 February 2009.

COMPILED  
Overlay Map  
**O6B**

Commencement date: 24 February 2009.





Special Management Areas

 Groundwater Area - Farnborough



Source Information:  
Projection:

GIS data supplied by Livingstone Shire, 2003.  
AGD 84, Zone 56



Planning Scheme 2005

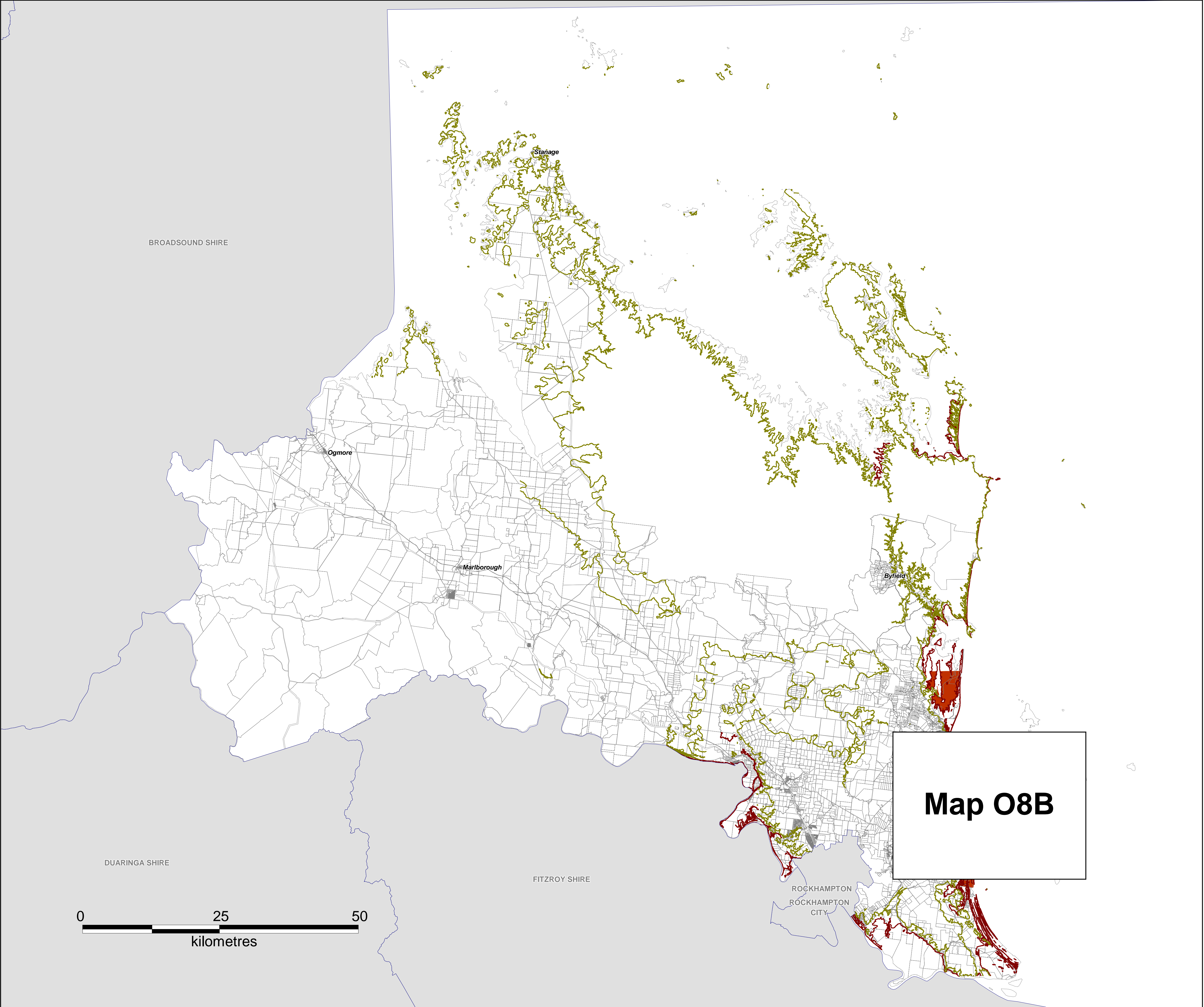
*living for lifestyle*

Overlay Map




**07**

Commencement date: 17 October 2005

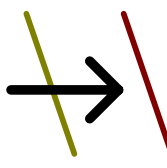




Special Management Areas

-  Limit of known or potential acid sulfate soils (as mapped by the Department of Natural Resources and Mines)
-  5m AHD
-  20m AHD

NOTES:

1. For interpreting levels of assessment, the area below RL 20m AHD where construction may involve excavation below RL 5m AHD is the area between the identified 5m contour and 20m contour as indicated. 
2. In some area, contour information (particularly 5m AHD) is not available. For these areas, site survey will establish land affected by the special management area.
3. The Acid Sulfate Soils special management area comprises all land, soil and sediment at or below RL 5m AHD where ground level is less than RL 20m AHD.



Source Information: GIS data supplied by Livingstone Shire, 2003.  
Projection: AGD 84, Zone 56



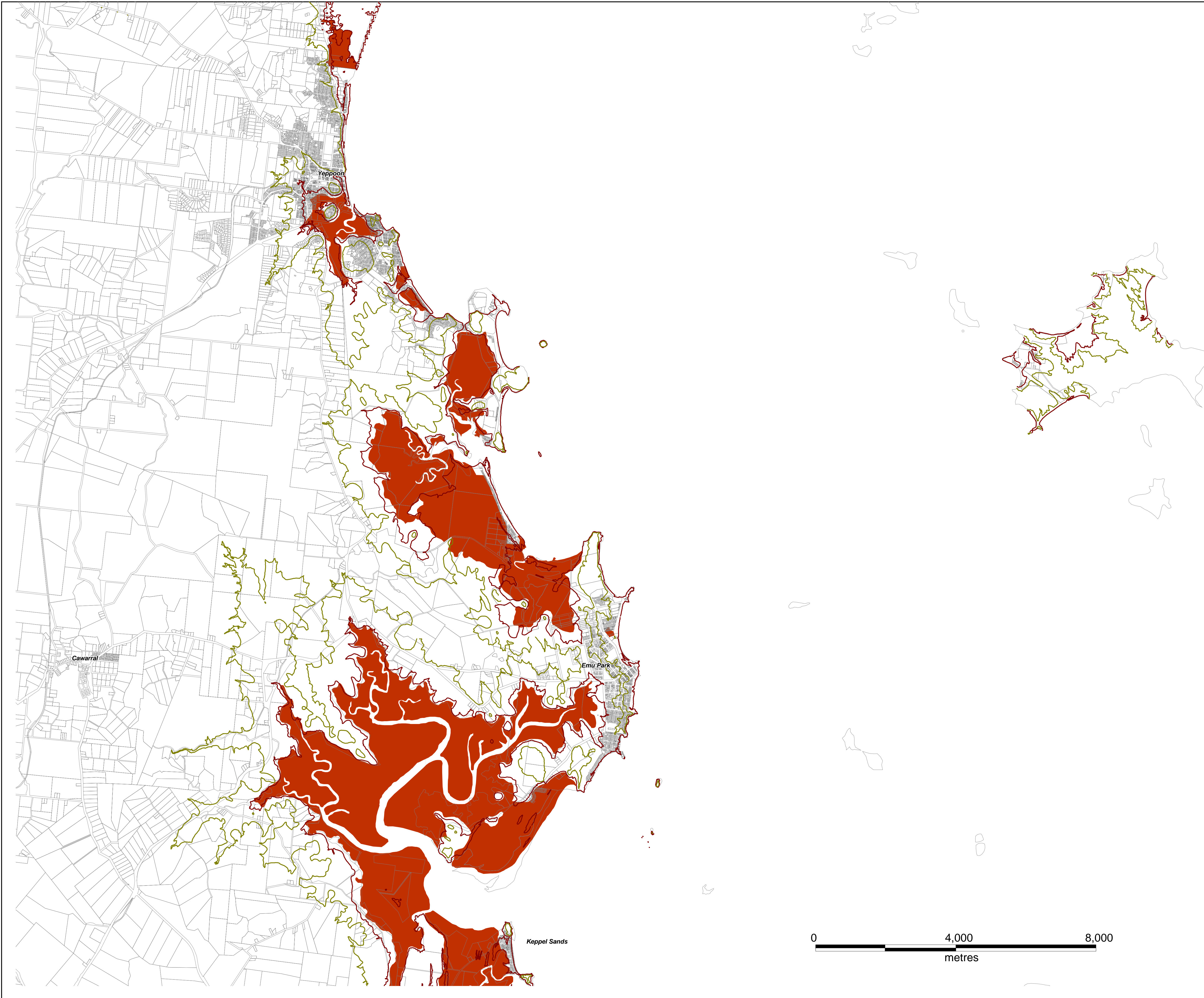
Planning Scheme 2005

*living for lifestyle*




Overlay Map  
**O8A**

Commencement date: 17 October 2005

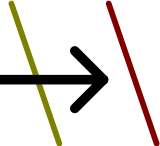




Special Management Areas

-  Limit of known or potential acid sulfate soils (as mapped by the Department of Natural Resources and Mines)
-  5m AHD
-  20m AHD

NOTES:

1. For interpreting levels of assessment, the area below RL 20m AHD where construction may involve excavation below RL 5m AHD is the area between the identified 5m contour and 20m contour as indicated. 
2. In some area, contour information (particularly 5m AHD) is not available. For these areas, site survey will establish land affected by the special management area.
3. The Acid Sulfate Soils special management area comprises all land, soil and sediment at or below RL 5m AHD where ground level is less than RL 20m AHD.

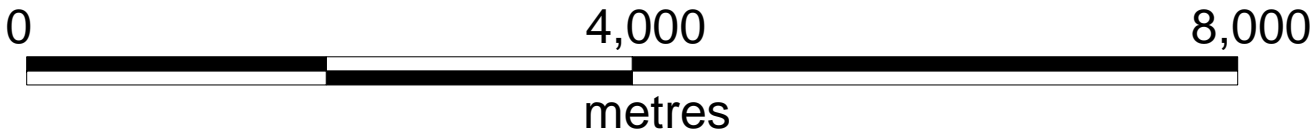
LOCATION MAP



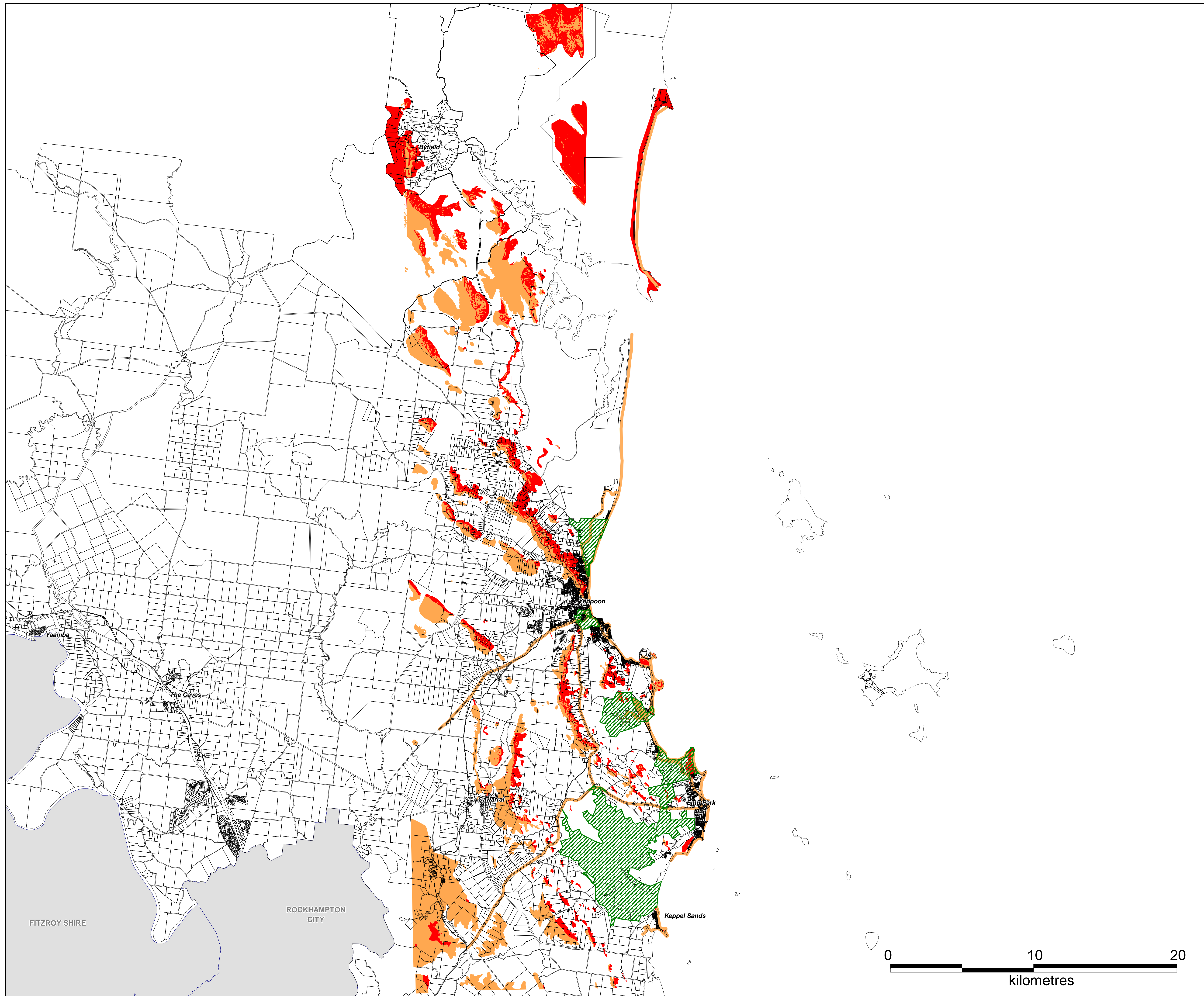
North



Source Information: GIS data supplied by Livingstone Shire, 2003.  
Projection: AGD 84, Zone 56







# Special Management Areas

- Precinct A
- Precinct B
- ▨ Green Break



Source Information: GIS data supplied by Livingstone Shire, 2003.  
SMA data from Chenoweth EPLA (2002) -  
"Capricorn Coast Landscape Study"  
Projection: AGD 84, Zone 56



Planning Scheme 2005

*living for lifestyle*

Overlay Map

**09**

Commencement date: 17 October 2005