



**Legend**

**Plans for Trunk Infrastructure**

- Future Trunk Infrastructure**
- Community Facility
  - Recreation Park
  - Sports Park

**Existing Trunk Infrastructure**

- Park and Land for Community Facilities

**Other**

- Priority Infrastructure Area Boundary
- Priority Infrastructure Area
- Area Outside Priority Infrastructure Area
- Cadastre - April 2024

**Service Catchments - Urban**

- PLCFSC - 01: Park and Land for Community Facilities Urban Service Catchment

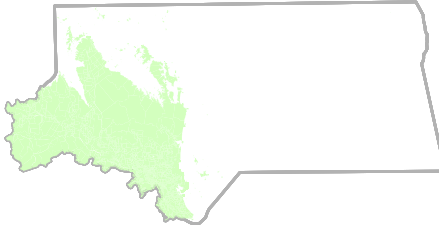
**Service Catchments - Non-Urban**

- PLCFSC - 02: Park and Land for Community Facilities Non-Urban Service Catchment



Copyright protects this publication. Reproduction by whatever means is prohibited without prior written permission of the Chief Executive Officer of Livingstone Shire Council. Livingstone Shire Council will not be held liable under any circumstances in connection with or arising out of the use of this data nor does it warrant that the data is error free. Any queries should be directed to the Customer Service Centre, Livingstone Shire Council or telephone 1300 790 919.

**Livingstone Shire Local Government Area**

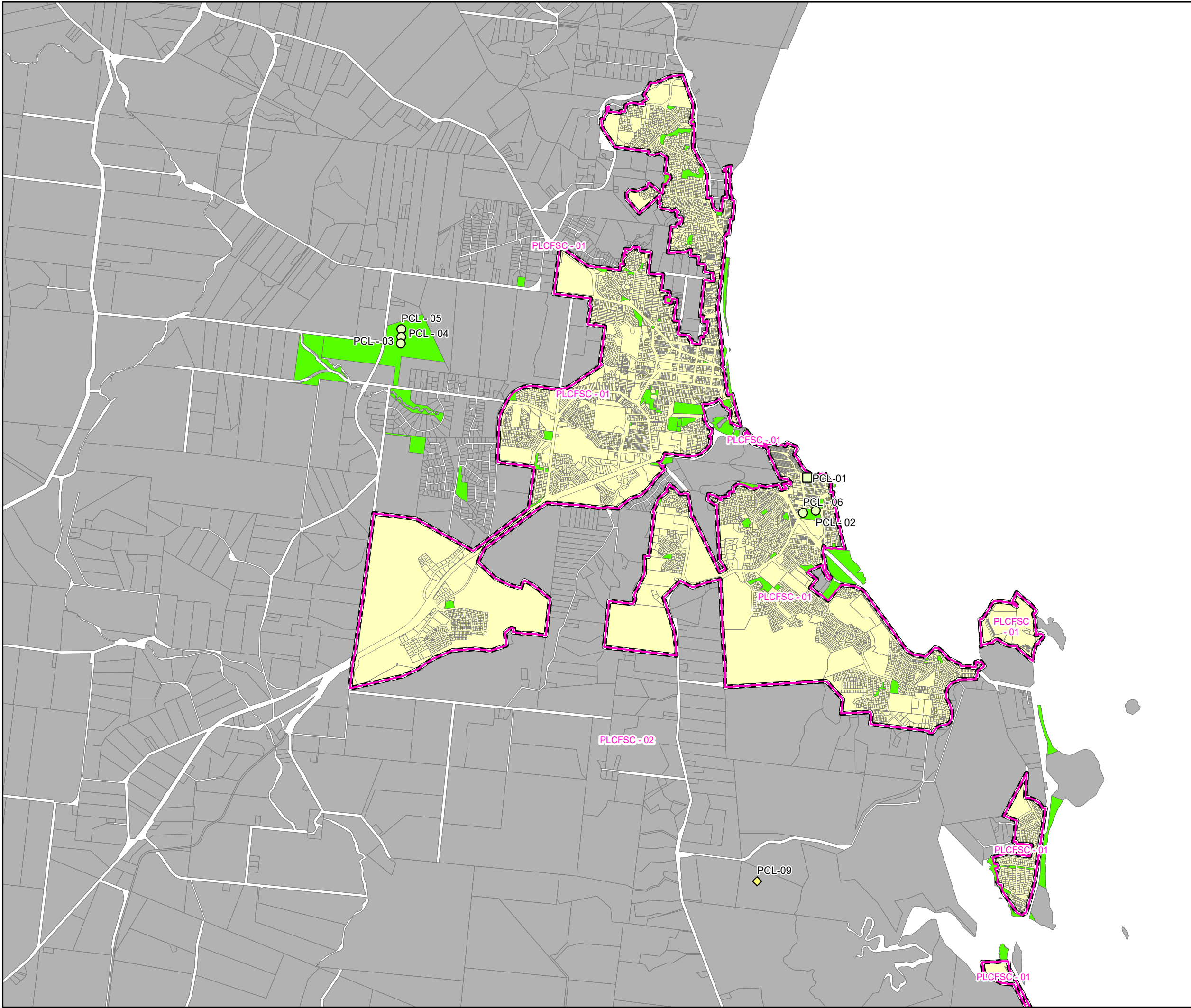


**Map PLCF - 01a**

**Park and Land for Community Facilities**

**Plans for Trunk Infrastructure**

**Shire**



**Legend**

**Plans for Trunk Infrastructure**

- Future Trunk Infrastructure**
- Community Facility
  - Recreation Park
  - Sports Park

**Existing Trunk Infrastructure**

- Park and Land for Community Facilities

**Other**

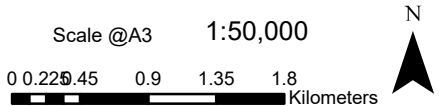
- Priority Infrastructure Area Boundary
- Priority Infrastructure Area
- Area Outside Priority Infrastructure Area
- Cadastre - April 2024

**Service Catchments - Urban**

- PLCFSC - 01: Park and Land for Community Facilities Urban Service Catchment

**Service Catchments - Non-Urban**

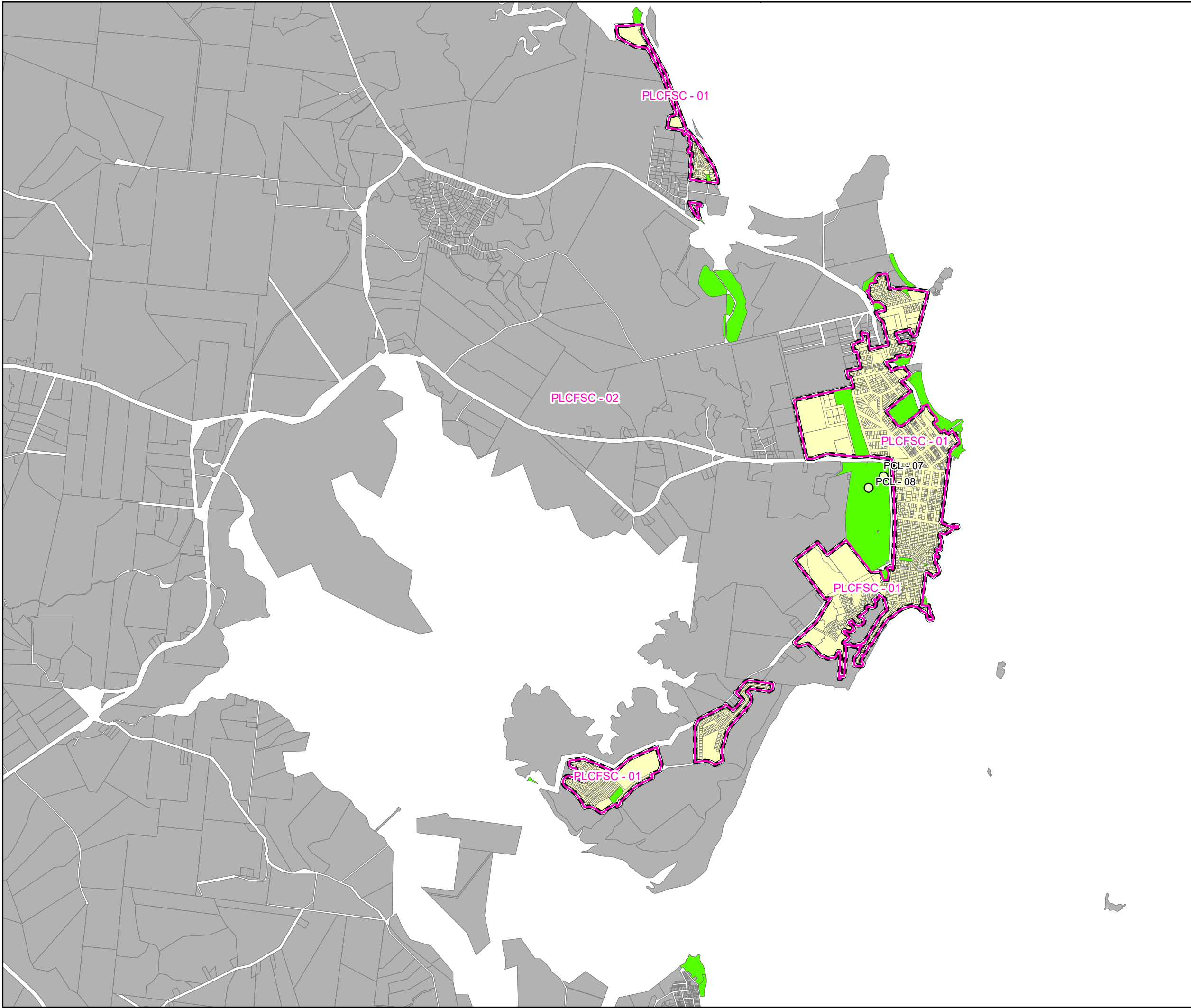
- PLCFSC - 02: Park and Land for Community Facilities Non-Urban Service Catchment



Copyright protects this publication. Reproduction by whatever means is prohibited without prior written permission of the Chief Executive Officer of Livingstone Shire Council. Livingstone Shire Council will not be held liable under any circumstances in connection with or arising out of the use of this data nor does it warrant that the data is error free. Any queries should be directed to the Customer Service Centre, Livingstone Shire Council or telephone 1300 790 919.







## Legend

### Plans for Trunk Infrastructure

- Future Trunk Infrastructure**
- Community Facility
  - Recreation Park
  - Sports Park

### Existing Trunk Infrastructure

- Park and Land for Community Facilities

### Other

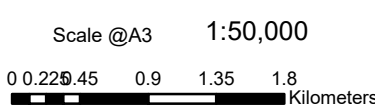
- Priority Infrastructure Area Boundary
- Priority Infrastructure Area
- Area Outside Priority Infrastructure Area
- Cadastre - April 2024

### Service Catchments - Urban

- PLCFSC - 01: Park and Land for Community Facilities Urban Service Catchment

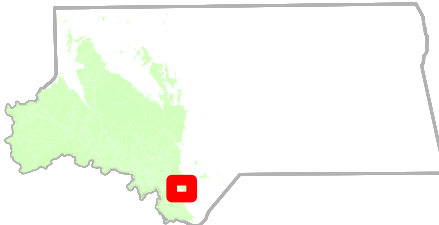
### Service Catchments - Non-Urban

- PLCFSC - 02: Park and Land for Community Facilities Non-Urban Service Catchment



Copyright protects this publication. Reproduction by whatever means is prohibited without prior written permission of the Chief Executive Officer of Livingstone Shire Council. Livingstone Shire Council will not be held liable under any circumstances in connection with or arising out of the use of this data nor does it warrant that the data is error free. Any queries should be directed to the Customer Service Centre, Livingstone Shire Council or telephone 1300 790 919.

### Livingstone Shire Local Government Area



### Map PLCF - 03a

### Park and Land for Community Facilities

### Plans for Trunk Infrastructure

### Emu Park and Surrounds

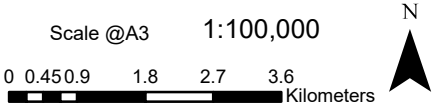
Version - State Review

LIVINGSTONE PLANNING SCHEME 2018

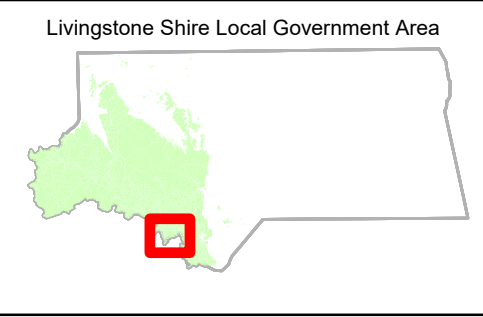




**Legend**  
**Plans for Trunk Infrastructure**  
**Future Trunk Infrastructure**  
Community Facility  
Recreation Park  
Sports Park  
**Existing Trunk Infrastructure**  
Park and Land for Community Facilities  
**Other**  
Priority Infrastructure Area Boundary  
Priority Infrastructure Area  
Area Outside Priority Infrastructure Area  
Cadastre - April 2024  
**Service Catchments - Urban**  
PLCFSC - 01: Park and Land for Community Facilities Urban Service Catchment  
**Service Catchments - Non-Urban**  
PLCFSC - 02: Park and Land for Community Facilities Non-Urban Service Catchment



Copyright protects this publication. Reproduction by whatever means is prohibited without prior written permission of the Chief Executive Officer of Livingstone Shire Council. Livingstone Shire Council will not be held liable under any circumstances in connection with or arising out of the use of this data nor does it warrant that the data is error free. Any queries should be directed to the Customer Service Centre, Livingstone Shire Council or telephone 1300 790 919.



Map PLCF - 04a

Park and Land for Community Facilities

Plans for Trunk Infrastructure

Rockyview and Surrounds

Version - State Review

LIVINGSTONE PLANNING SCHEME 2018