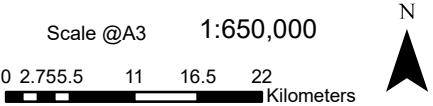
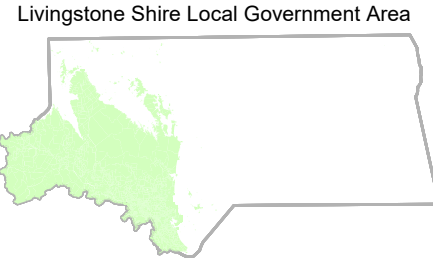


- Legend**
- Plans for Trunk Infrastructure**
- Future Trunk Infrastructure**
- Sewer Pump Station
 - Sewer Trunk Main
- Existing Trunk Infrastructure**
- Sewer Treatment Plant
 - Sewer Pump Station
 - Sewer Trunk Main
- Other**
- Priority Infrastructure Area Boundary
 - Priority Infrastructure Area
 - Area Outside Priority Infrastructure Area
 - Cadastre - April 2024
- Service Catchments**
- SNSC - 01: Yeppoon Sewerage Network Service Catchment
 - SNSC - 02: Hidden Valley West Sewerage Network Service Catchment
 - SNSC - 03: Lammermoor Sewerage Network Service Catchment
 - SNSC - 04: Taroomball Sewerage Network Service Catchment
 - SNSC - 05: Kinka and Tanby Sewerage Network Service Catchment
 - SNSC - 06: Emu Park and Zilzie Sewerage Network Service Catchment



Copyright protects this publication. Reproduction by whatever means is prohibited without prior written permission of the Chief Executive Officer of Livingstone Shire Council. Livingstone Shire Council will not be held liable under any circumstances in connection with or arising out of the use of this data nor does it warrant that the data is error free. Any queries should be directed to the Customer Service Centre, Livingstone Shire Council or telephone 1300 790 919.

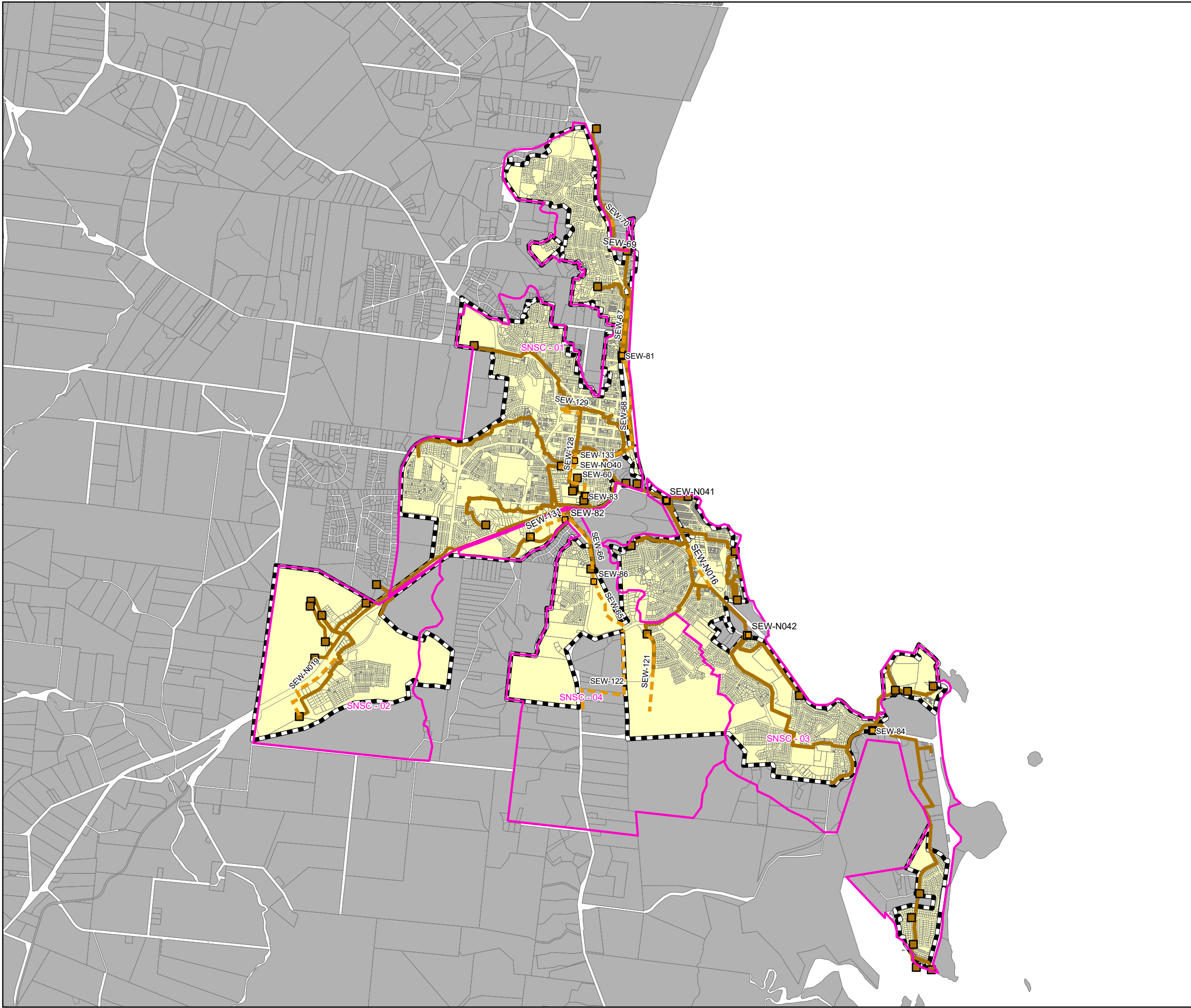


Map SN - 01a

Sewerage Network

Plans for Trunk Infrastructure

Shire



Legend

Plans for Trunk Infrastructure

Future Trunk Infrastructure

- Sewer Pump Station
- Sewer Trunk Main

Existing Trunk Infrastructure

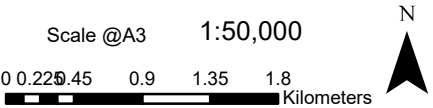
- Sewer Treatment Plant
- Sewer Pump Station
- Sewer Trunk Main

Other

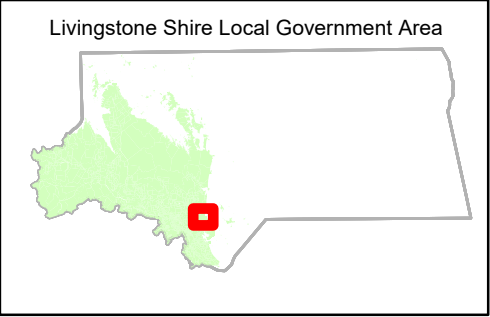
- Priority Infrastructure Area Boundary
- Priority Infrastructure Area
- Area Outside Priority Infrastructure Area
- Cadastre - April 2024

Service Catchments

- SNSC - 01: Yeppoon Sewerage Network Service Catchment
- SNSC - 02: Hidden Valley West Sewerage Network Service Catchment
- SNSC - 03: Lammermoor Sewerage Network Service Catchment
- SNSC - 04: Taroomball Sewerage Network Service Catchment
- SNSC - 05: Kinka and Tanby Sewerage Network Service Catchment
- SNSC - 06: Emu Park and Zilzie Sewerage Network Service Catchment



Copyright protects this publication. Reproduction by whatever means is prohibited without prior written permission of the Chief Executive Officer of Livingstone Shire Council. Livingstone Shire Council will not be held liable under any circumstances in connection with or arising out of the use of this data nor does it warrant that the data is error free. Any queries should be directed to the Customer Service Centre, Livingstone Shire Council or telephone 1300 790 919.



Map SN - 02a

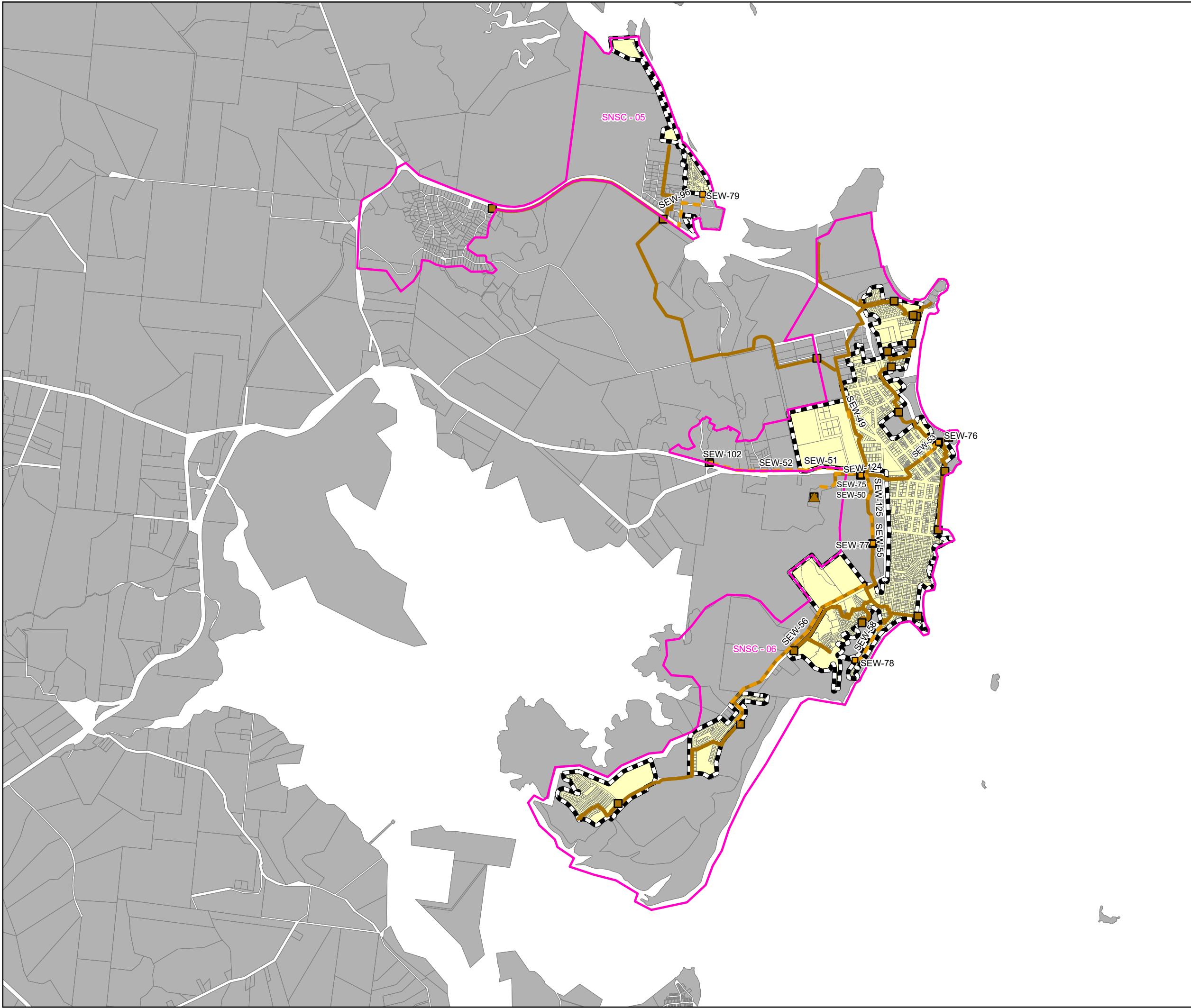
Sewerage Network

Plans for Trunk Infrastructure

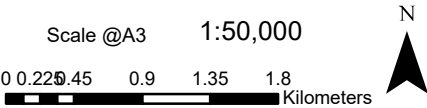
Yeppoon and Surrounds

Version - State Review

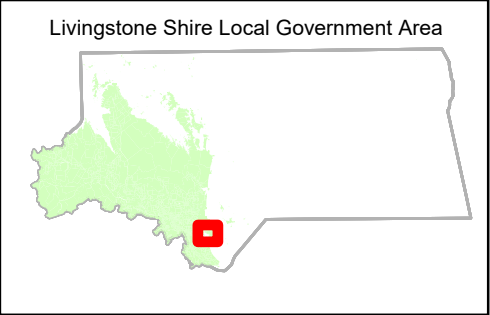
LIVINGSTONE PLANNING SCHEME 2018



Legend
Plans for Trunk Infrastructure
Future Trunk Infrastructure
Sewer Pump Station
Sewer Trunk Main
Existing Trunk Infrastructure
Sewer Treatment Plant
Sewer Pump Station
Sewer Trunk Main
Other
Priority Infrastructure Area Boundary
Priority Infrastructure Area
Area Outside Priority Infrastructure Area
Cadastre - April 2024
Service Catchments
SNSC - 01: Yeppoon Sewerage Network Service Catchment
SNSC - 02: Hidden Valley West Sewerage Network Service Catchment
SNSC - 03: Lammermoor Sewerage Network Service Catchment
SNSC - 04: Taroomball Sewerage Network Service Catchment
SNSC - 05: Kinka and Tanby Sewerage Network Service Catchment
SNSC - 06: Emu Park and Zilzie Sewerage Network Service Catchment



Copyright protects this publication. Reproduction by whatever means is prohibited without prior written permission of the Chief Executive Officer of Livingstone Shire Council. Livingstone Shire Council will not be held liable under any circumstances in connection with or arising out of the use of this data nor does it warrant that the data is error free. Any queries should be directed to the Customer Service Centre, Livingstone Shire Council or telephone 1300 790 919.



Map SN - 03a
Sewerage Network
Plans for Trunk Infrastructure
Emu Park and Surrounds
Version - State Review
LIVINGSTONE PLANNING SCHEME 2018