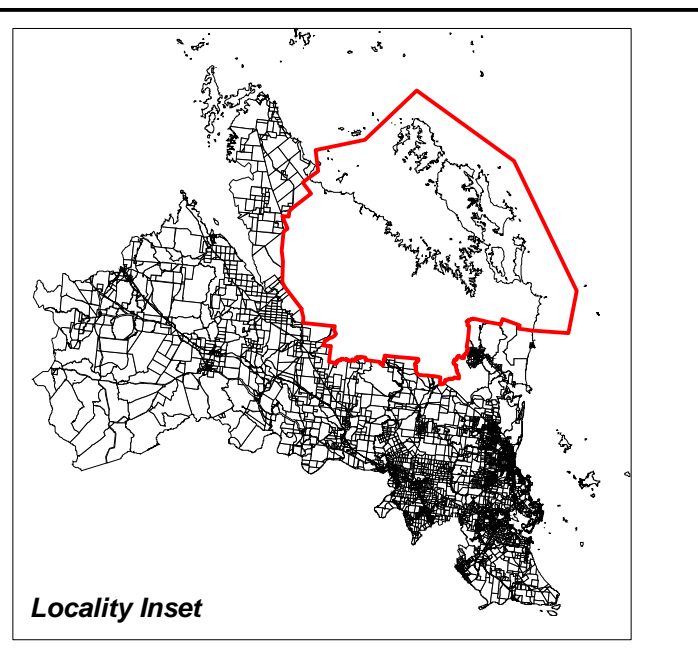


North

This publication has been produced by the Livingstone Shire Council and is based on cadastral data provided with the permission of the Department of Natural Resources  
 © 2000 State of Queensland (Department of Natural Resources) and Livingstone Shire Council  
 Map\_17.WOR Source Information: GIS Data supplied by Livingstone Shire.

ZONES	PRECINCTS
Special Purpose	R1 Residential 1
Open Space	R2 Residential 2
Rural	R3 Residential 3
Residential	
Comprehensive Development	
Park Residential	LI Light Industry
Business	GI General Industry
Industry	
Village	
Yeppoon Central	



Livingstone Shire Council  
 FROM THE BUSH TO THE BAYS

Planning Scheme 2005

*living for lifestyle*

**Zoning Map**  
**Z17**  
 Shoalwater

Commencement date: 17 October 2005